

FOR LEASE

1662 N. U.S. HIGHWAY ONE

Jupiter, FL 33469

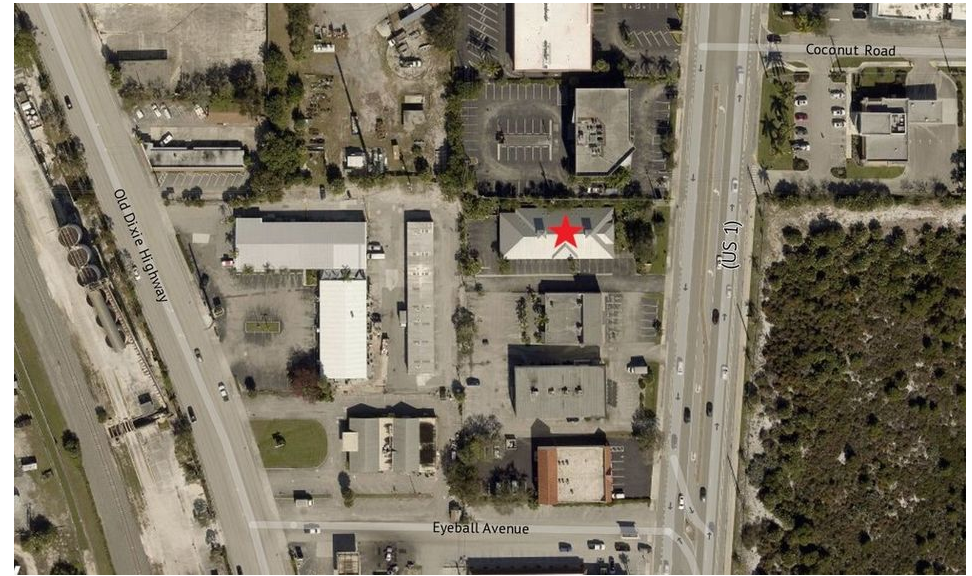
PRESENTED BY:

ROB HAMMAN

O: 561.340.0865 | C: 561.346.2310

robert.hamman@svn.com





OFFERING SUMMARY

AVAILABLE SF:	1,163± SF [Suite C]
LEASE RATE:	\$21.00 SF/yr
LEASE TYPE:	Gross
TRAFFIC COUNT:	33,000 [2019]
YEAR BUILT:	2004
ZONING:	Office [NO Medical]
APN:	30434031360000050

PROPERTY OVERVIEW

1,163± SF office with a waiting room, reception area, multiple private offices, private bathroom [ADA compliant], and a kitchen. Large monument sign available.

LOCATION OVERVIEW

This property is located 0.25± miles north of the U.S. 1 & N. Alt. A1A intersection. Easy access to prestigious Jupiter Island, Jupiter Inlet Village, Harbourside Place, and Indiantown Rd, the main east-west corridor for Jupiter.

DEMOGRAPHICS

	1 MILE	3 MILES	5 MILES
TOTAL HOUSEHOLDS	2,492	14,197	31,085
TOTAL POPULATION	5,320	34,218	74,644
AVERAGE HH INCOME	\$97,717	\$101,283	\$103,271

ROB HAMMAN

O: 561.340.0865 | C: 561.346.2310

robert.hamman@svn.com

1662 N. U.S. HIGHWAY ONE Jupiter, FL 33469

We obtained the information above from sources we believe to be reliable. However, we have not verified its accuracy and make no guarantee, warranty or representation about it. It is submitted subject to the possibility of errors, omissions, change of price, rental or other conditions, prior sale, lease or financing, or withdrawal without notice. We include projections, opinions, assumptions or estimates for example only, and they may not represent current or future performance of the property. You and your tax and legal advisors should conduct your own investigation of the property and transaction.

SVN | COMMERCIAL PARTNERS 2



ROB HAMMAN

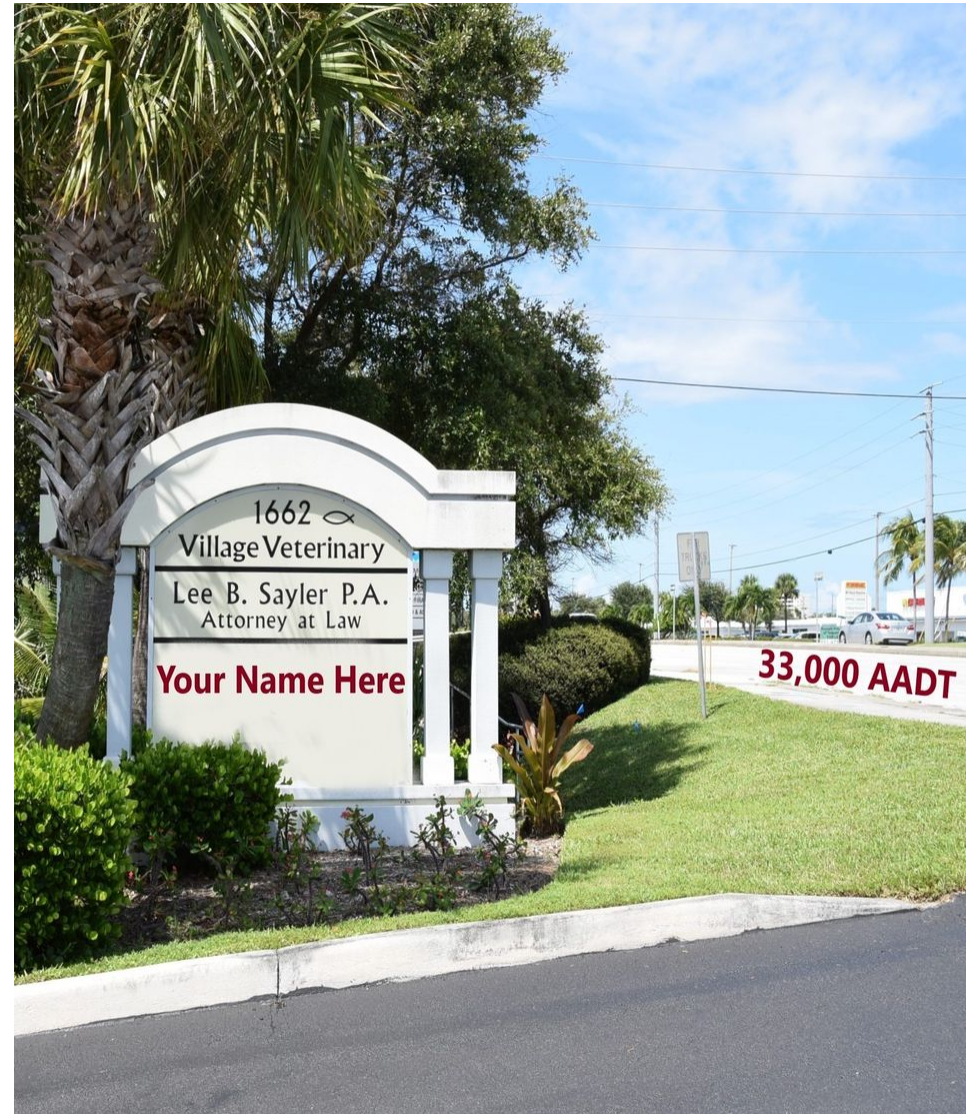
O: 561.340.0865 | C: 561.346.2310

robert.hamman@svn.com

1662 N. U.S. HIGHWAY ONE Jupiter, FL 33469

We obtained the information above from sources we believe to be reliable. However, we have not verified its accuracy and make no guarantee, warranty or representation about it. It is submitted subject to the possibility of errors, omissions, change of price, rental or other conditions, prior sale, lease or financing, or withdrawal without notice. We include projections, opinions, assumptions or estimates for example only, and they may not represent current or future performance of the property. You and your tax and legal advisors should conduct your own investigation of the property and transaction.

SVN | COMMERCIAL PARTNERS 3



ROB HAMMAN

O: 561.340.0865 | C: 561.346.2310

robert.hamman@svn.com

1662 N. U.S. HIGHWAY ONE Jupiter, FL 33469

We obtained the information above from sources we believe to be reliable. However, we have not verified its accuracy and make no guarantee, warranty or representation about it. It is submitted subject to the possibility of errors, omissions, change of price, rental or other conditions, prior sale, lease or financing, or withdrawal without notice. We include projections, opinions, assumptions or estimates for example only, and they may not represent current or future performance of the property. You and your tax and legal advisors should conduct your own investigation of the property and transaction.

SVN | COMMERCIAL PARTNERS 4

ROB HAMMAN

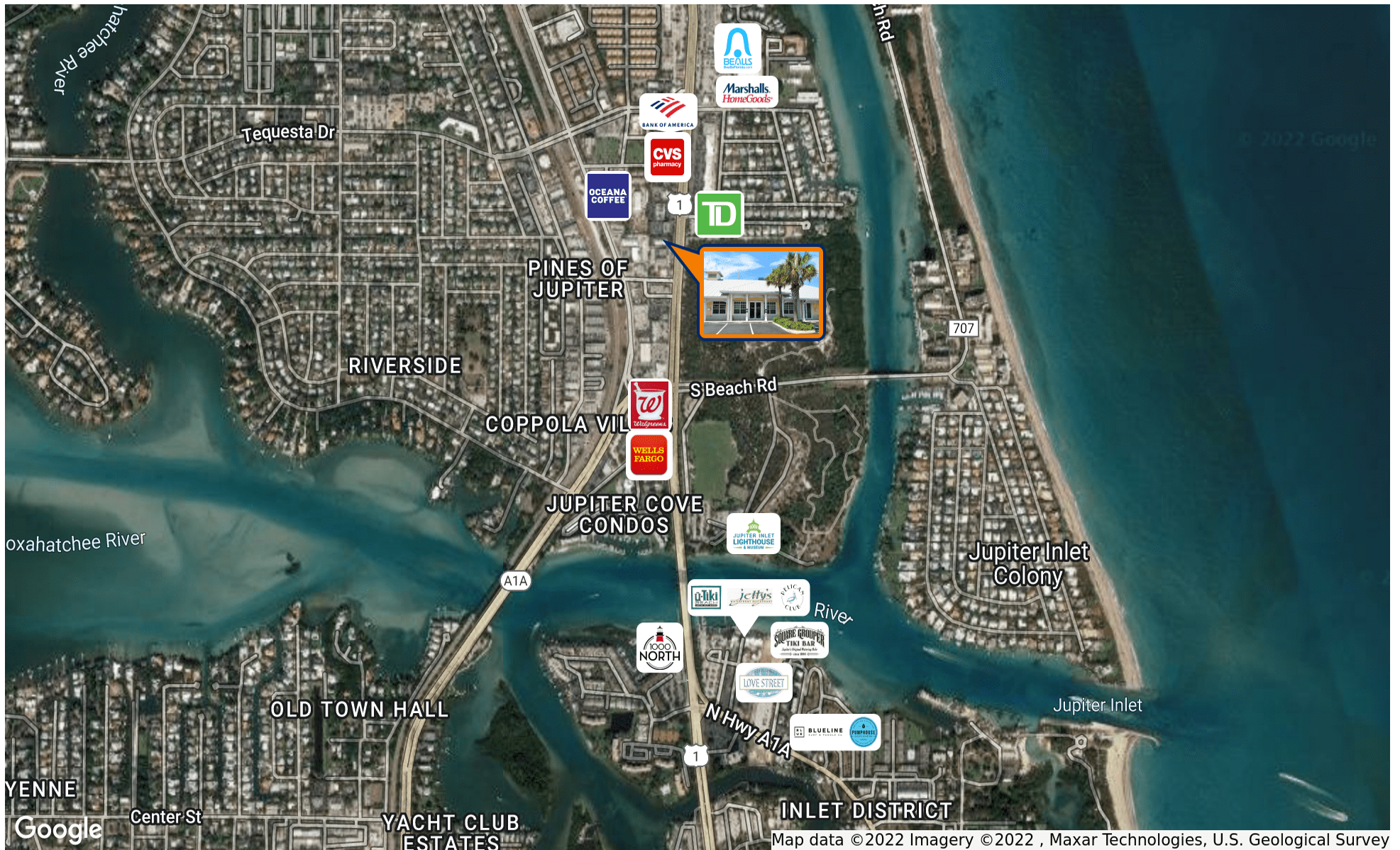
O: 561.340.0865 | C: 561.346.2310

robert.hamman@svn.com

1662 N. U.S. HIGHWAY ONE Jupiter, FL 33469

We obtained the information above from sources we believe to be reliable. However, we have not verified its accuracy and make no guarantee, warranty or representation about it. It is submitted subject to the possibility of errors, omissions, change of price, rental or other conditions, prior sale, lease or financing, or withdrawal without notice. We include projections, opinions, assumptions or estimates for example only, and they may not represent current or future performance of the property. You and your tax and legal advisors should conduct your own investigation of the property and transaction.

SVN | COMMERCIAL PARTNERS 5



ROB HAMMAN

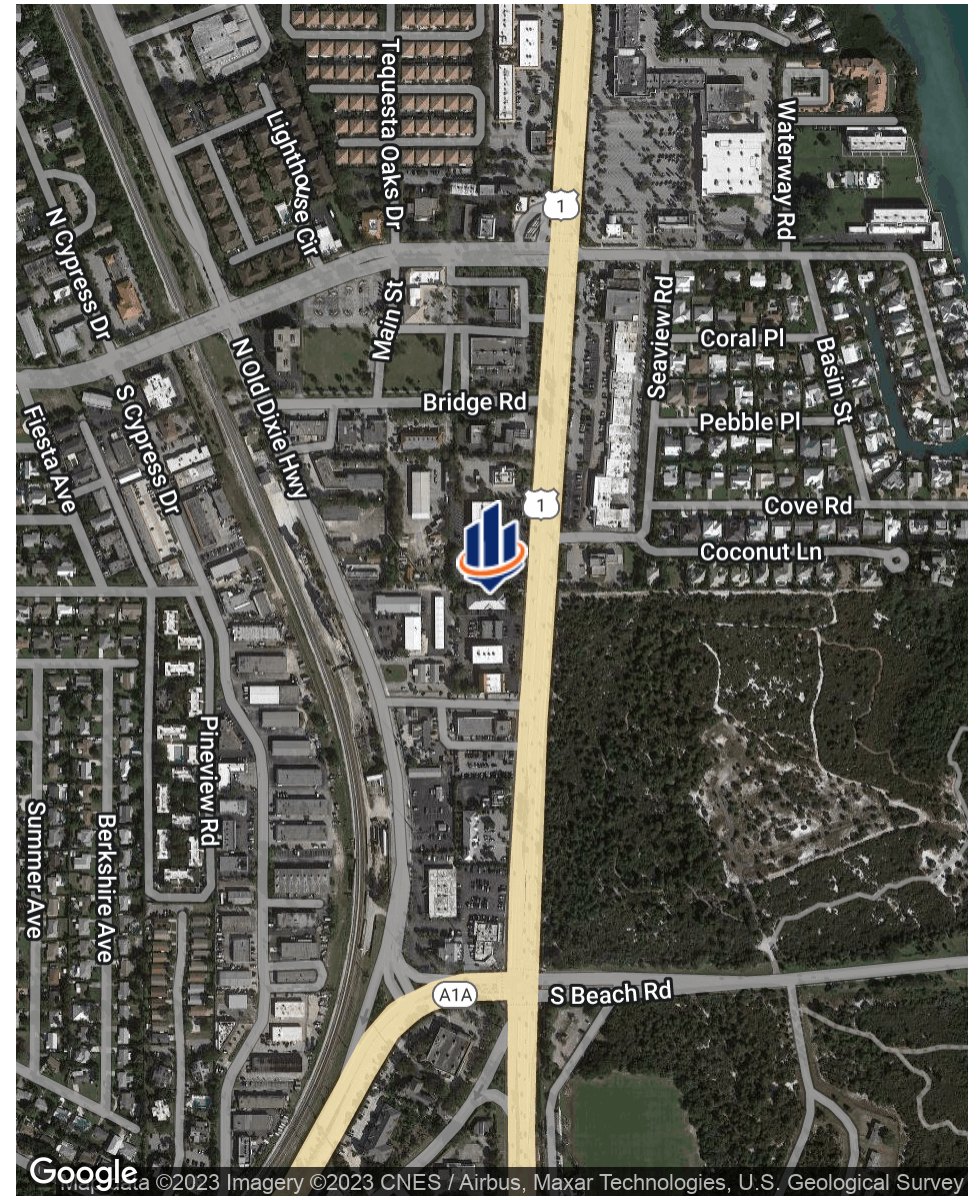
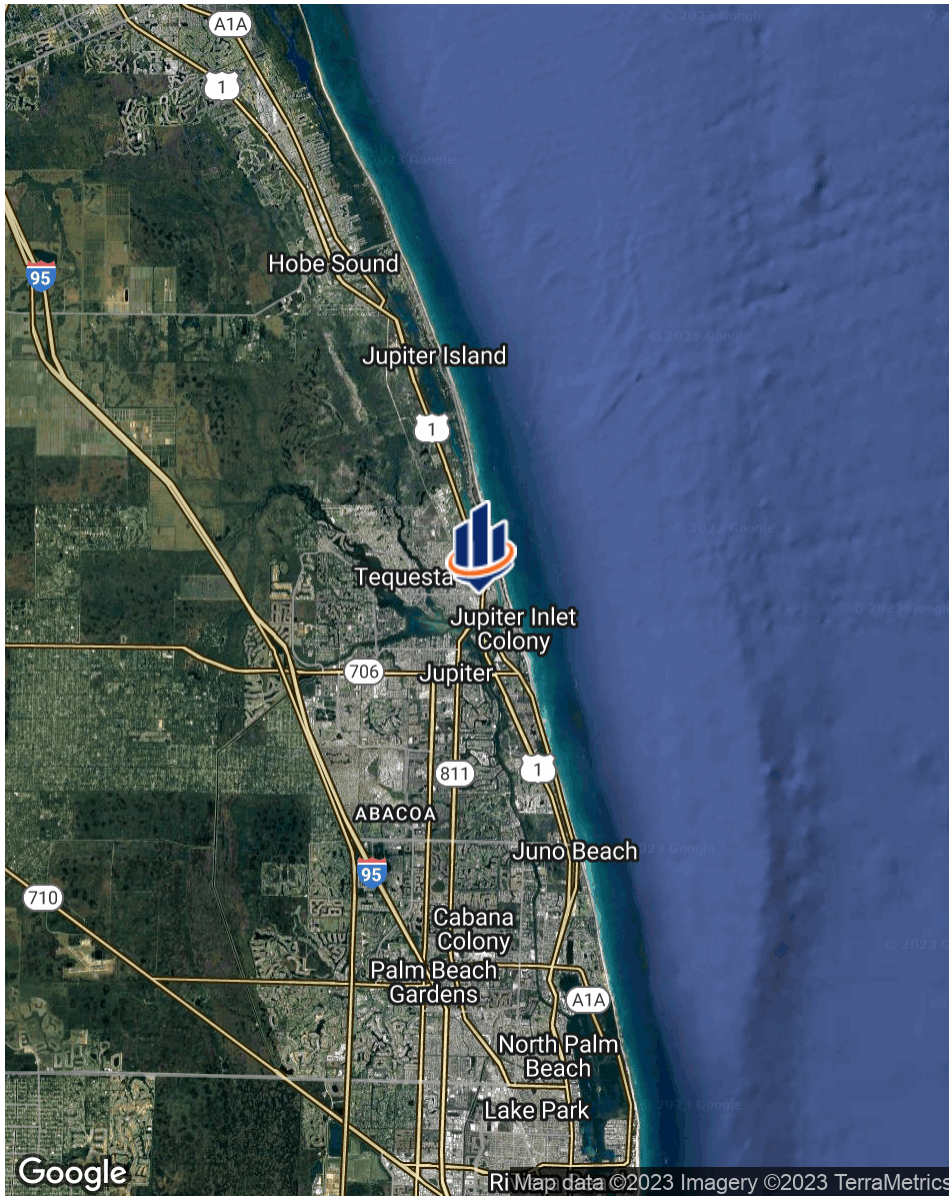
O: 561.340.0865 | C: 561.346.2310

robert.hamman@svn.com

1662 N. U.S. HIGHWAY ONE Jupiter, FL 33469

We obtained the information above from sources we believe to be reliable. However, we have not verified its accuracy and make no guarantee, warranty or representation about it. It is submitted subject to the possibility of errors, omissions, change of price, rental or other conditions, prior sale, lease or financing, or withdrawal without notice. We include projections, opinions, assumptions or estimates for example only, and they may not represent current or future performance of the property. You and your tax and legal advisors should conduct your own investigation of the property and transaction.

SVN | COMMERCIAL PARTNERS 6



ROB HAMMAN

O: 561.340.0865 | C: 561.346.2310

robert.hamman@svn.com

1662 N. U.S. HIGHWAY ONE Jupiter, FL 33469

We obtained the information above from sources we believe to be reliable. However, we have not verified its accuracy and make no guarantee, warranty or representation about it. It is submitted subject to the possibility of errors, omissions, change of price, rental or other conditions, prior sale, lease or financing, or withdrawal without notice. We include projections, opinions, assumptions or estimates for example only, and they may not represent current or future performance of the property. You and your tax and legal advisors should conduct your own investigation of the property and transaction.

SVN | COMMERCIAL PARTNERS 7

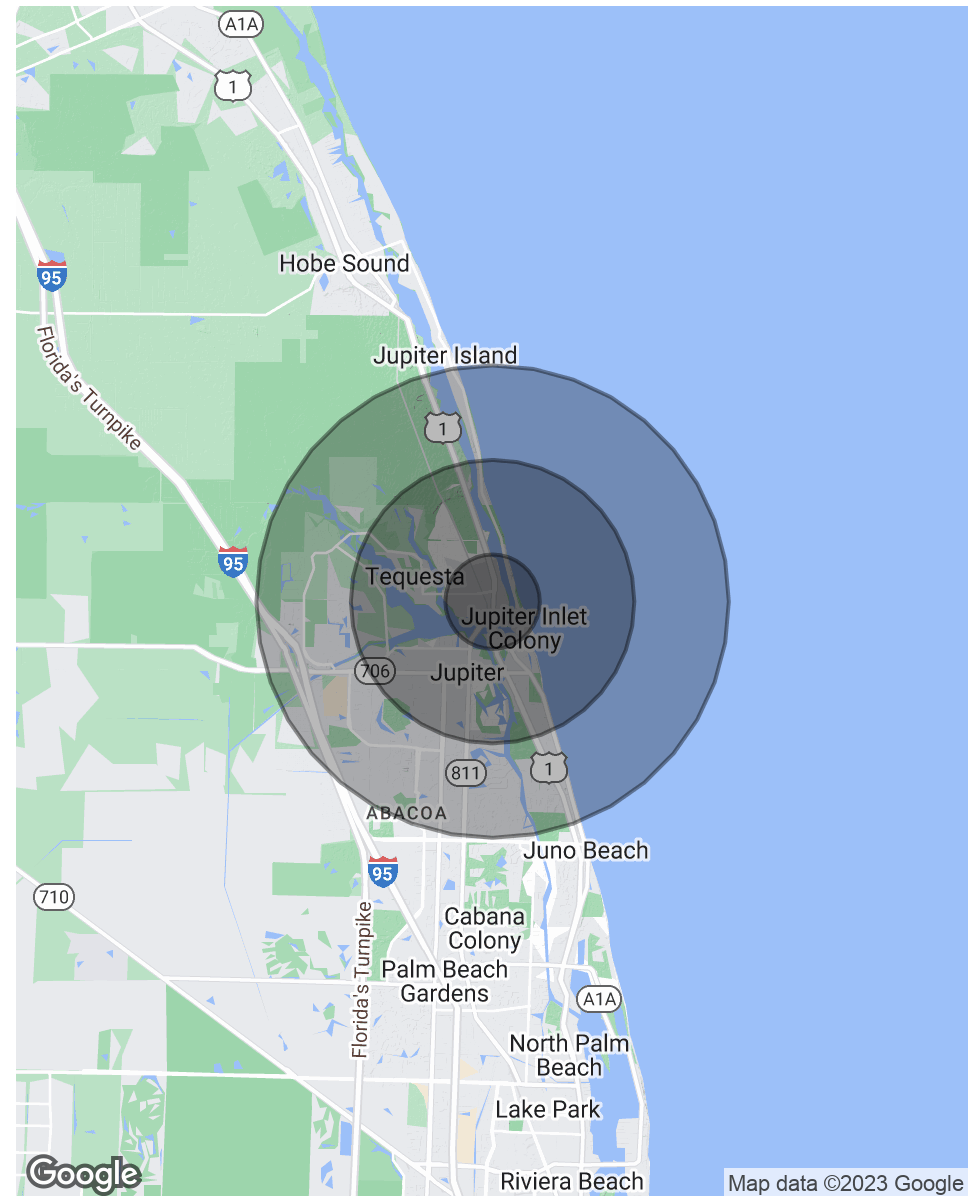
POPULATION

	1 MILE	3 MILES	5 MILES
TOTAL POPULATION	5,320	34,218	74,644
AVERAGE AGE	50.7	45.9	45.1
AVERAGE AGE (MALE)	50.2	45.4	44.9
AVERAGE AGE (FEMALE)	50.8	45.8	45.2

HOUSEHOLDS & INCOME

	1 MILE	3 MILES	5 MILES
TOTAL HOUSEHOLDS	2,492	14,197	31,085
# OF PERSONS PER HH	2.1	2.4	2.4
AVERAGE HH INCOME	\$97,717	\$101,283	\$103,271
AVERAGE HOUSE VALUE	\$391,151	\$437,893	\$439,146

* Demographic data derived from 2020 ACS - US Census



ROB HAMMAN

O: 561.340.0865 | C: 561.346.2310

robert.hamman@svn.com

1662 N. U.S. HIGHWAY ONE Jupiter, FL 33469

We obtained the information above from sources we believe to be reliable. However, we have not verified its accuracy and make no guarantee, warranty or representation about it. It is submitted subject to the possibility of errors, omissions, change of price, rental or other conditions, prior sale, lease or financing, or withdrawal without notice. We include projections, opinions, assumptions or estimates for example only, and they may not represent current or future performance of the property. You and your tax and legal advisors should conduct your own investigation of the property and transaction.

SVN | COMMERCIAL PARTNERS 8

PRESENTED BY:

ROB HAMMAN

561.340.0865 | 561.346.2310

robert.hamman@svn.com

