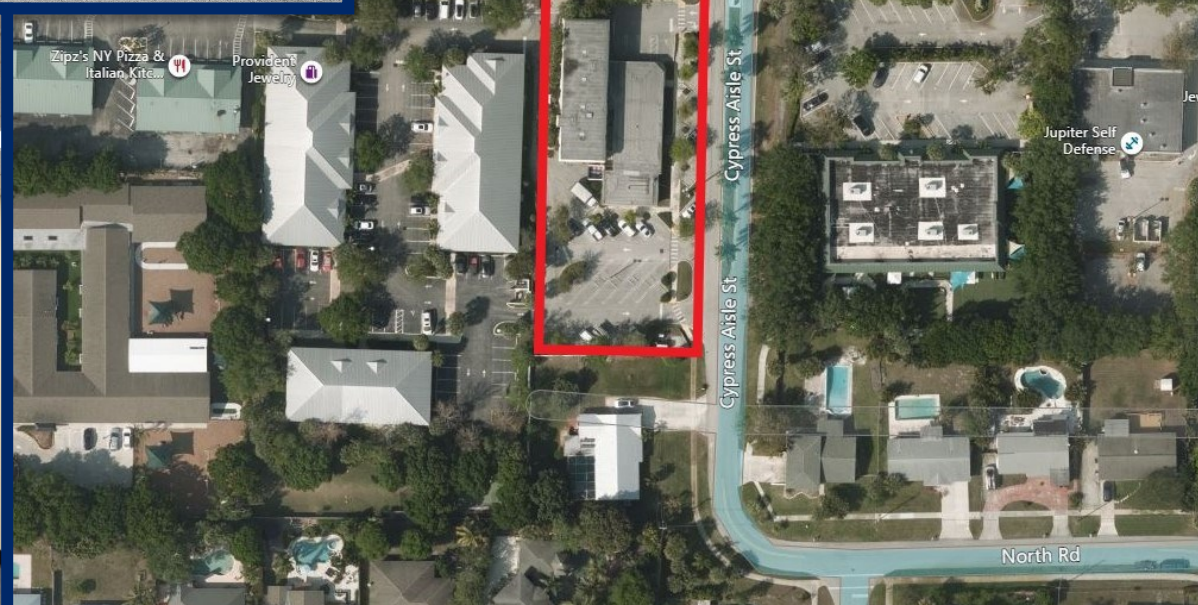




3,163± SF Office Space on Indiantown Road

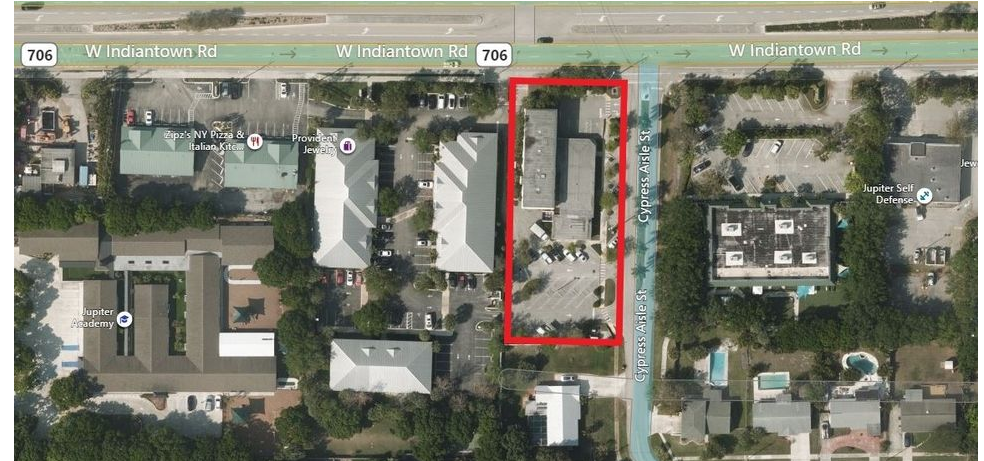
**800 W. Indiantown Road
Jupiter**



Robert Hamman | Managing Director | 561.346.2310 | robert.hamman@svn.com

SVN COMMERCIAL PARTNERS | 810 SATURN STREET, SUITE 24, JUPITER, FL 33477 | WWW.JUPITERCOMMERCIAL.US

Lease Summary



LEASING SUMMARY

Space Size:	3,163± SF
Lease Rate:	Inquire for Pricing
Lease Type:	NNN
Year Renovated:	2012
Traffic Count:	46,000± [2019]
Parking Spaces:	39

PROPERTY OVERVIEW

3,163± SF office space contains with two private offices, full kitchen and break room, workstation area, and two bathrooms.

This building is completely updated, including the HVAC system, ADA bathrooms, sprinklers throughout, plumbing, three-phase electric, hurricane windows, and doors throughout, as well as a freight lift. Great visibility. Easy access. Close proximity to I-95, Florida's Turnpike and U.S. 1. High Traffic Count of 46,000± [2019].

PROPERTY HIGHLIGHTS

- Second floor office space with private offices, kitchen/break room, open layout
- New Roof - Upgraded Landscaping - Parking lot paved and striped
- High Traffic Count of 46,000± with Incredible Exposure and Visibility
- Illuminating Monument and Building Signs Available
- Very Close Proximity to I-95, FL Turnpike, U.S. One and Military Trail

800 W. INDIANTOWN ROAD JUPITER, FL 33458

SVN | Commercial Partners | Page 2

The information presented here is deemed to be accurate, but it has not been independently verified. We make no guarantee, warranty or representation. It is your responsibility to independently confirm accuracy and completeness. All SVN® offices are independently owned and operated.

800 W. Indiantown Road



800 W. INDIANTOWN ROAD JUPITER, FL 33458

SVN | Commercial Partners | Page 3

The information presented here is deemed to be accurate, but it has not been independently verified. We make no guarantee, warranty or representation. It is your responsibility to independently confirm accuracy and completeness. All SVN® offices are independently owned and operated.

800 W. Indiantown Road



800 W. INDIANTOWN ROAD JUPITER, FL 33458

SVN | Commercial Partners | Page 4

The information presented here is deemed to be accurate, but it has not been independently verified. We make no guarantee, warranty or representation. It is your responsibility to independently confirm accuracy and completeness. All SVN® offices are independently owned and operated.

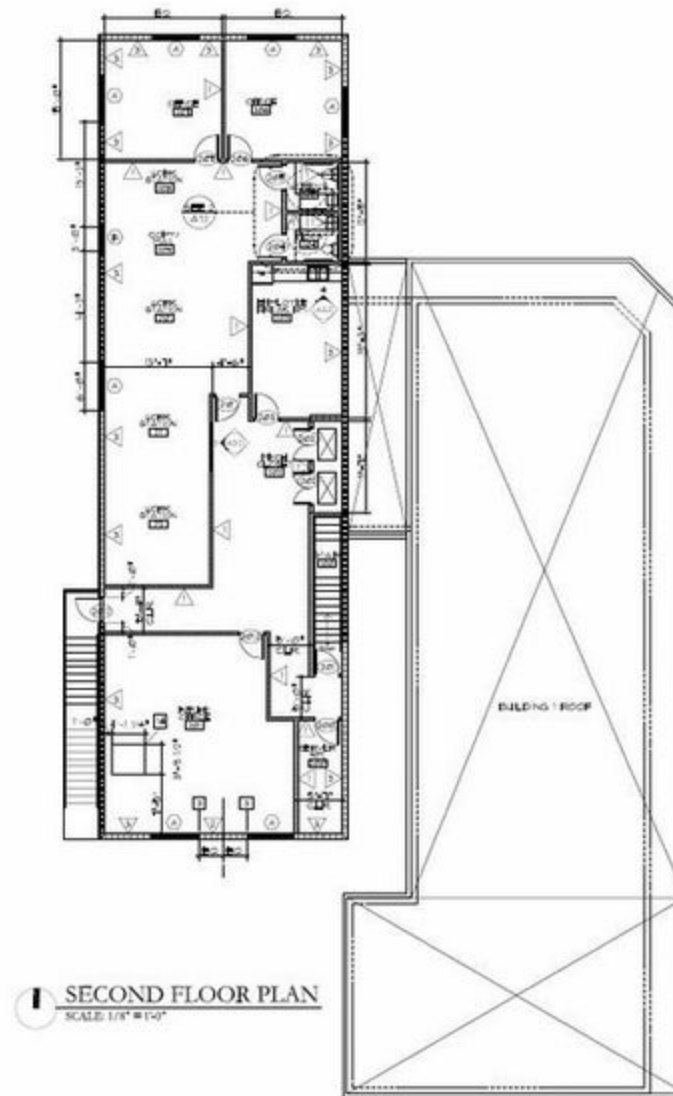
Interior Photos



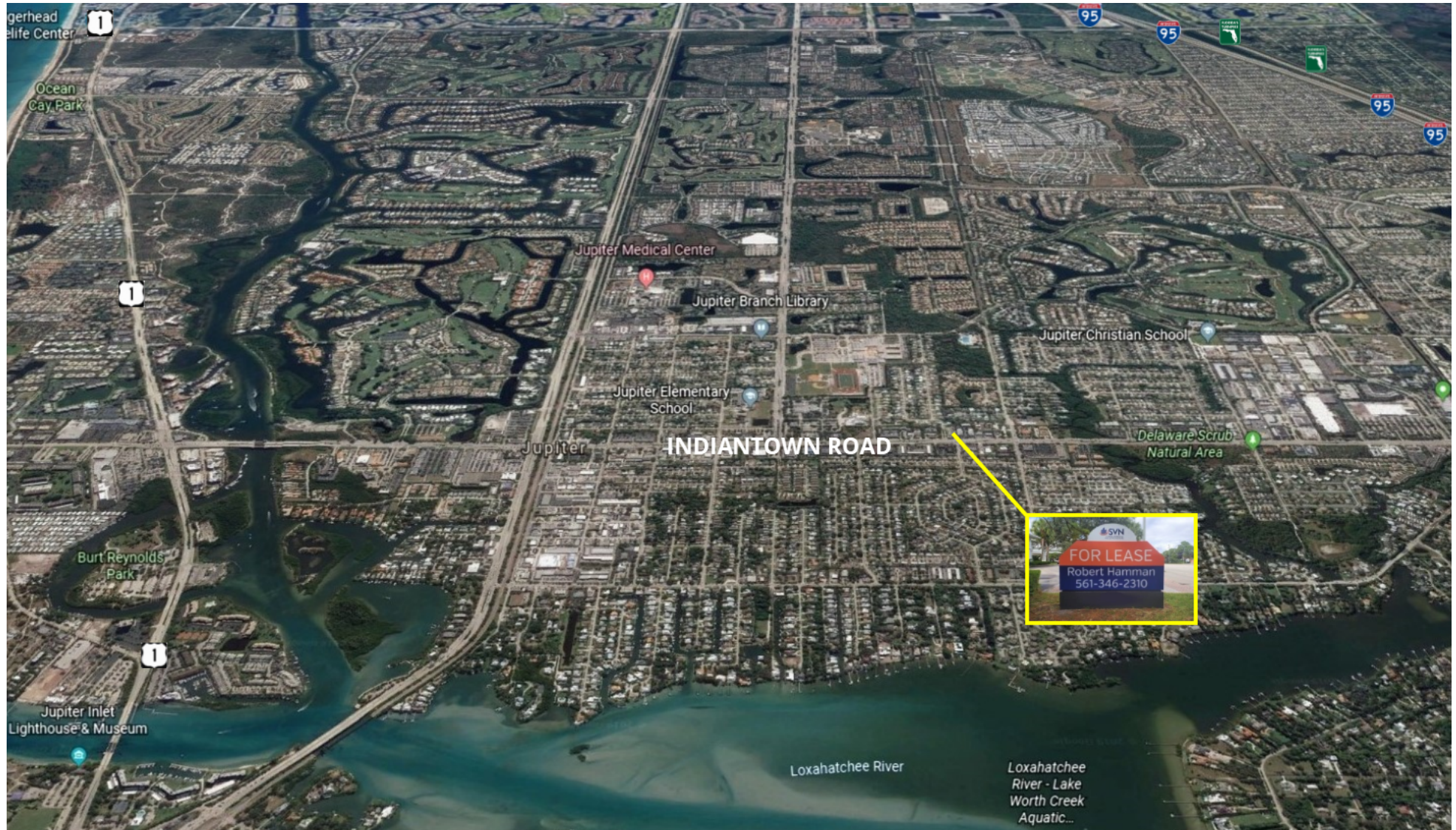
Interior Photos



Floor Plan



Location Map

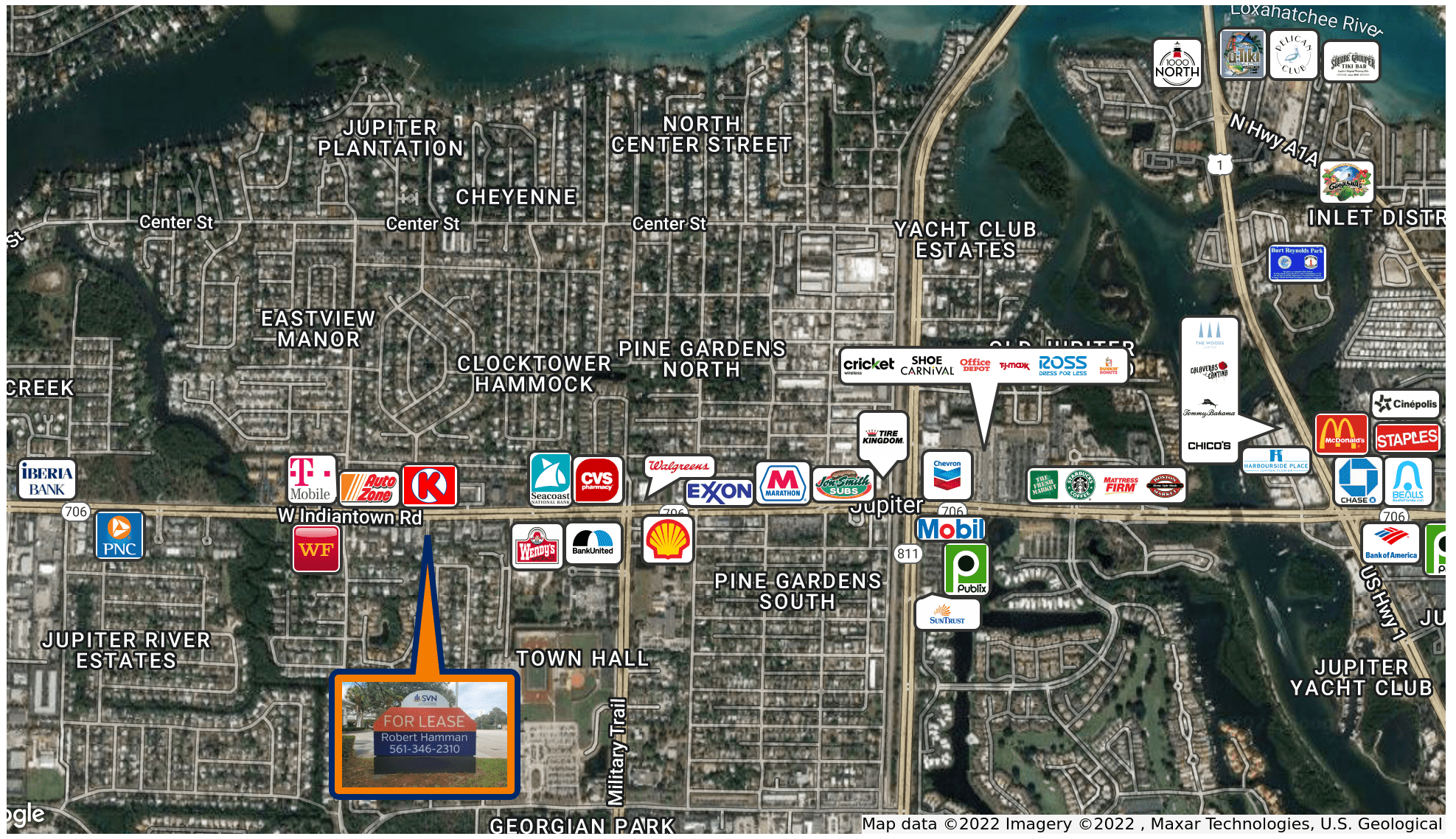


800 W. INDIANTOWN ROAD JUPITER, FL 33458

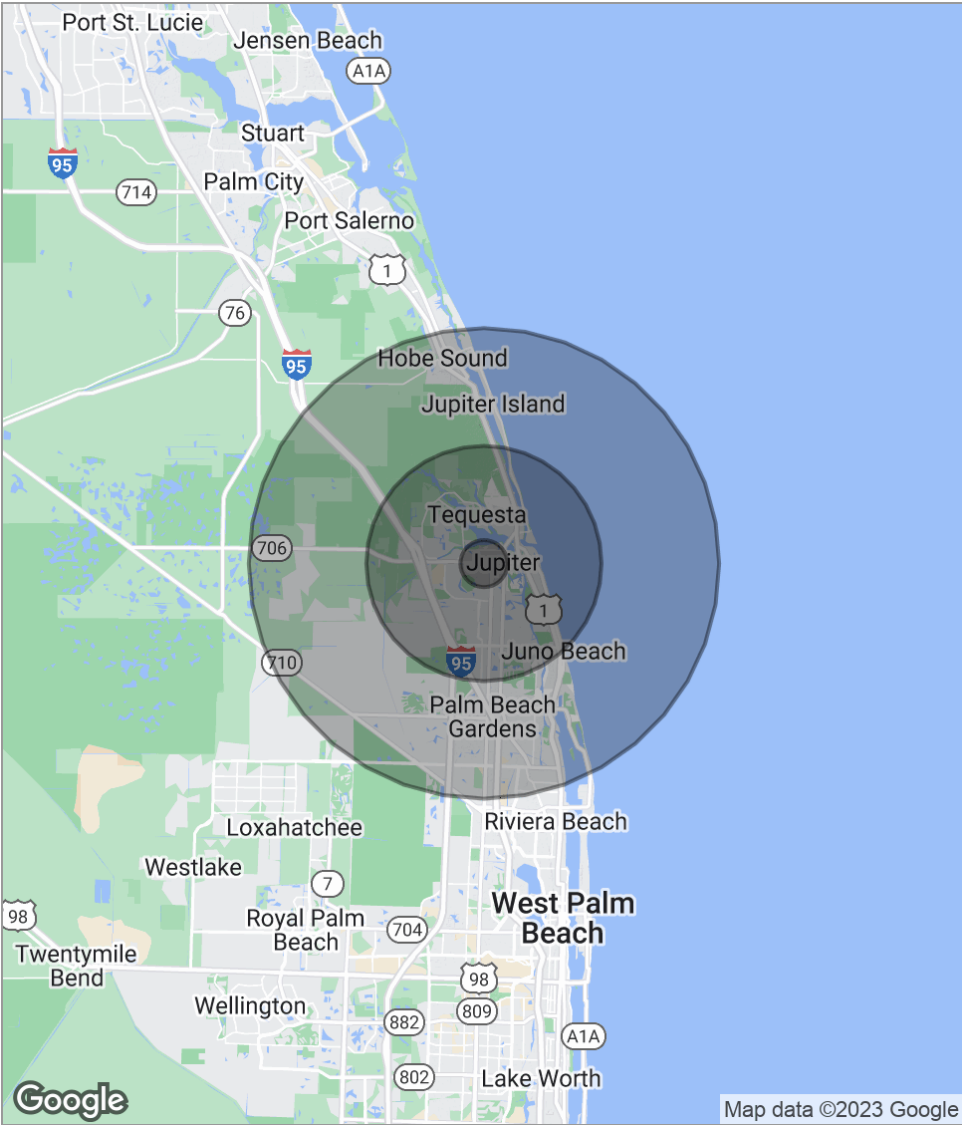
SVN | Commercial Partners | Page 8

The information presented here is deemed to be accurate, but it has not been independently verified. We make no guarantee, warranty or representation. It is your responsibility to independently confirm accuracy and completeness. All SVN® offices are independently owned and operated.

Retailer Map



Demographics Map



POPULATION	1 MILE	5 MILES	10 MILES
Total population	7,113	92,809	201,279
Median age	42.6	44.5	45.3
Median age (Male)	42.4	44.5	45.3
Median age (Female)	42.4	44.6	45.3
HOUSEHOLDS & INCOME	1 MILE	5 MILES	10 MILES
Total households	2,762	38,355	85,087
# of persons per HH	2.6	2.4	2.4
Average HH income	\$103,327	\$106,552	\$103,912
Average house value	\$383,000	\$454,129	\$425,438

* Demographic data derived from 2020 ACS - US Census



1800 Corporate Blvd. NW, Suite 100
Boca Raton, FL 33431
561.340.0865
svncp.com