



104

# Breakwater Ct

Retail/Restaurant/Medical



HARBOURSIDE PLACE



Rob Hamman | Managing Director | 561.346.2310 | [robert.hamman@svn.com](mailto:robert.hamman@svn.com)

SVN COMMERCIAL PARTNERS | 810 SATURN STREET, STE 24., JUPITER, FL 33477 | [WWW.JUPITERCOMMERCIAL.US](http://WWW.JUPITERCOMMERCIAL.US)





## OFFERING SUMMARY

LEASE RATE:	N/A
SPACE SIZE MIN:	2,095± SF
SPACE SIZE MAX:	3,992± SF
LEASE TYPE:	NNN
TRAFFIC COUNT:	21,300 [2019]
VIDEO:	<a href="#">View Here</a>

## PROPERTY OVERVIEW

2,095± SF end-cap retail/restaurant/medical space located on the south side of the main entrance to Harbourside Place. Great visibility and signage. Can be combined with 108 Breakwater Ct for a total of 3,992± SF.

Retail, Office, and Medical space available at Harbourside Place. Located along the intracoastal waterway in Jupiter, Harbourside Place is a mixed-use complex with 365,252± SF comprised of office space and ground floor retail/office, plus the exclusive 4-diamond Wyndham Grand Jupiter Hotel. The property benefits from the surrounding upscale residential market, as well as the prevalent location along the Intracoastal Waterway with water views and yacht/boat dockage. Come join The Woods, Mana Greek Fusion, Tommy Bahama's, Calaveras Cantina, BURGERFI, Lola Dre, Wyndham Grand Jupiter, John Craig Clothier, Subculture Coffee, Francesca's Collection, and many more at this premier downtown destination.

## LOCATION OVERVIEW

Harbourside Place is located on the northwest corner of Indiantown Road and U.S. Highway One, directly on the intracoastal waterway.

**ROB HAMMAN**

C: 561.346.2310

robert.hamman@svn.com

**HARBOURSIDE PLACE** 200 N. U.S. Highway One Jupiter, FL 33477

**SVN | COMMERCIAL PARTNERS 2**

We obtained the information above from sources we believe to be reliable. However, we have not verified its accuracy and make no guarantee, warranty or representation about it. It is submitted subject to the possibility of errors, omissions, change of price, rental or other conditions, prior sale, lease or financing, or withdrawal without notice. We include projections, opinions, assumptions or estimates for example only, and they may not represent current or future performance of the property. You and your tax and legal advisors should conduct your own investigation of the property and transaction.





**ROB HAMMAN**

C: 561.346.2310

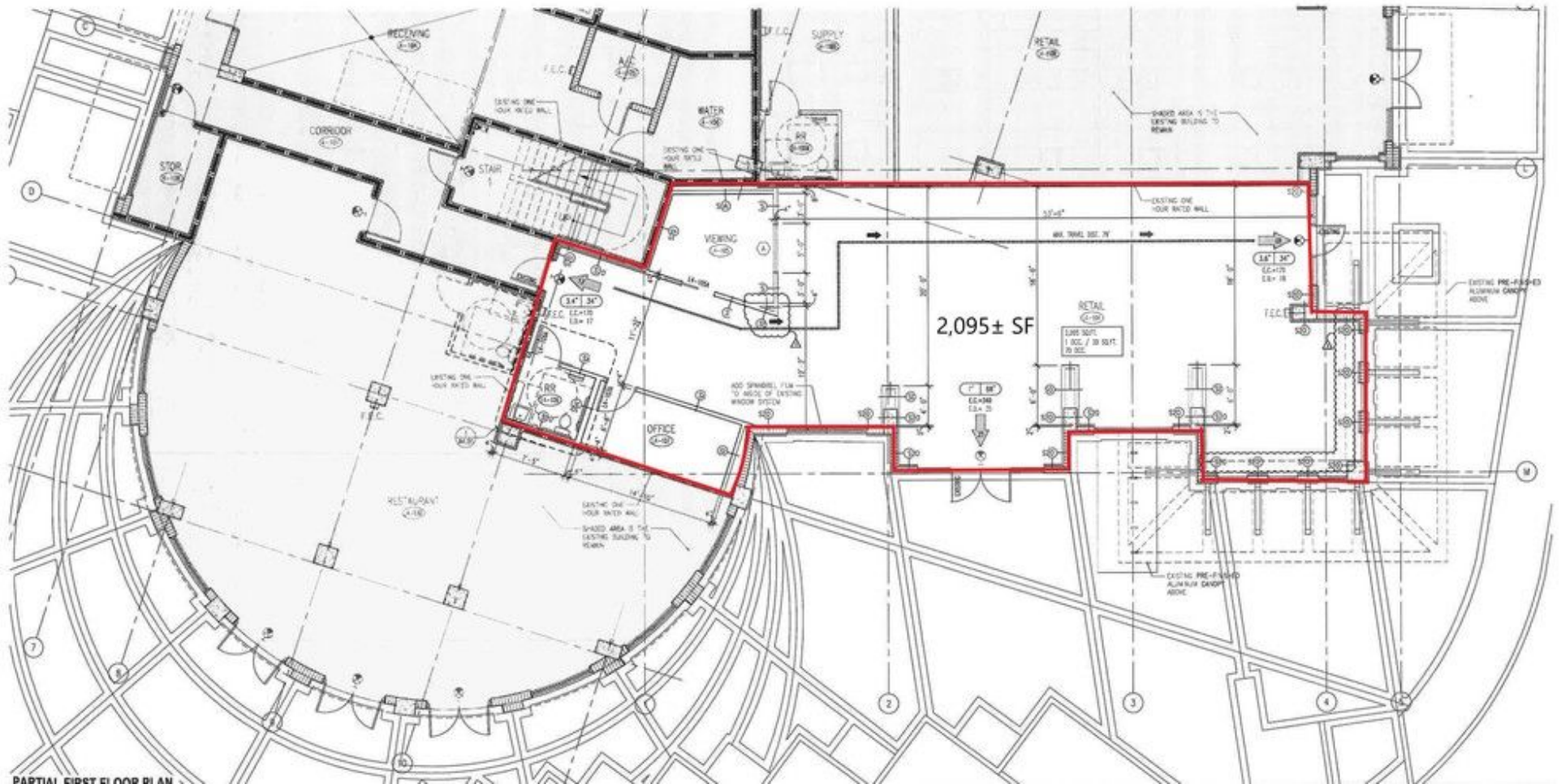
robert.hamman@svn.com

**HARBOURSIDE PLACE** 200 N. U.S. Highway One Jupiter, FL 33477

We obtained the information above from sources we believe to be reliable. However, we have not verified its accuracy and make no guarantee, warranty or representation about it. It is submitted subject to the possibility of errors, omissions, change of price, rental or other conditions, prior sale, lease or financing, or withdrawal without notice. We include projections, opinions, assumptions or estimates for example only, and they may not represent current or future performance of the property. You and your tax and legal advisors should conduct your own investigation of the property and transaction.

**SVN | COMMERCIAL PARTNERS 3**





ROB HAMMAN

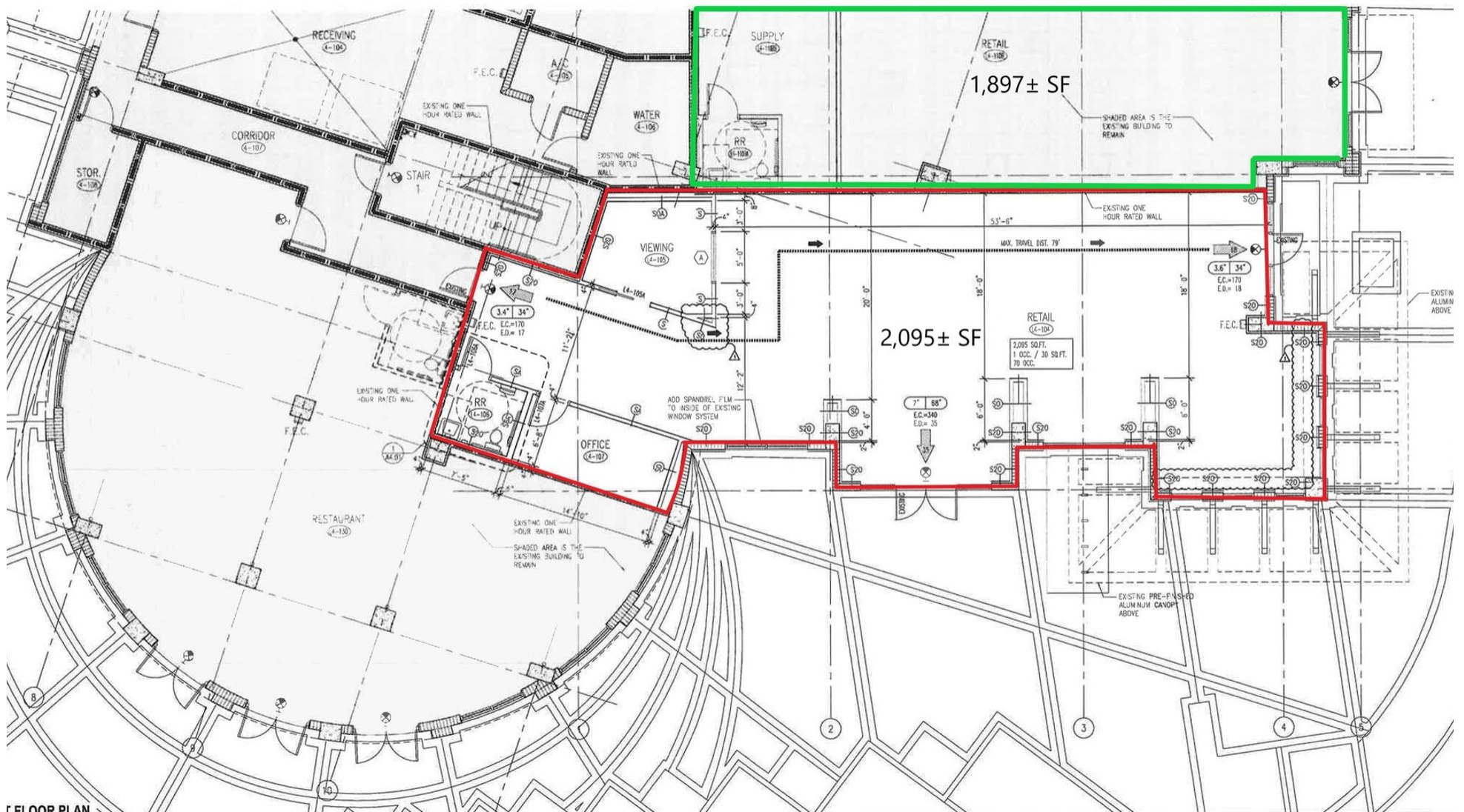
C: 561.346.2310

robert.hamman@svn.com

HARBOURSIDE PLACE 200 N. U.S. Highway One Jupiter, FL 33477

SVN | COMMERCIAL PARTNERS 4

We obtained the information above from sources we believe to be reliable. However, we have not verified its accuracy and make no guarantee, warranty or representation about it. It is submitted subject to the possibility of errors, omissions, change of price, rental or other conditions, prior sale, lease or financing, or withdrawal without notice. We include projections, opinions, assumptions or estimates for example only, and they may not represent current or future performance of the property. You and your tax and legal advisors should conduct your own investigation of the property and transaction.



**ROB HAMMAN**  
 C: 561.346.2310  
 robert.hamman@svn.com

**HARBOURSIDE PLACE** 200 N. U.S. Highway One Jupiter, FL 33477

**SVN | COMMERCIAL PARTNERS** 5

We obtained the information above from sources we believe to be reliable. However, we have not verified its accuracy and make no guarantee, warranty or representation about it. It is submitted subject to the possibility of errors, omissions, change of price, rental or other conditions, prior sale, lease or financing, or withdrawal without notice. We include projections, opinions, assumptions or estimates for example only, and they may not represent current or future performance of the property. You and your tax and legal advisors should conduct your own investigation of the property and transaction.





**ROB HAMMAN**

C: 561.346.2310

robert.hamman@svn.com

**HARBOURSIDE PLACE** 200 N. U.S. Highway One Jupiter, FL 33477

We obtained the information above from sources we believe to be reliable. However, we have not verified its accuracy and make no guarantee, warranty or representation about it. It is submitted subject to the possibility of errors, omissions, change of price, rental or other conditions, prior sale, lease or financing, or withdrawal without notice. We include projections, opinions, assumptions or estimates for example only, and they may not represent current or future performance of the property. You and your tax and legal advisors should conduct your own investigation of the property and transaction.

**SVN | COMMERCIAL PARTNERS 6**





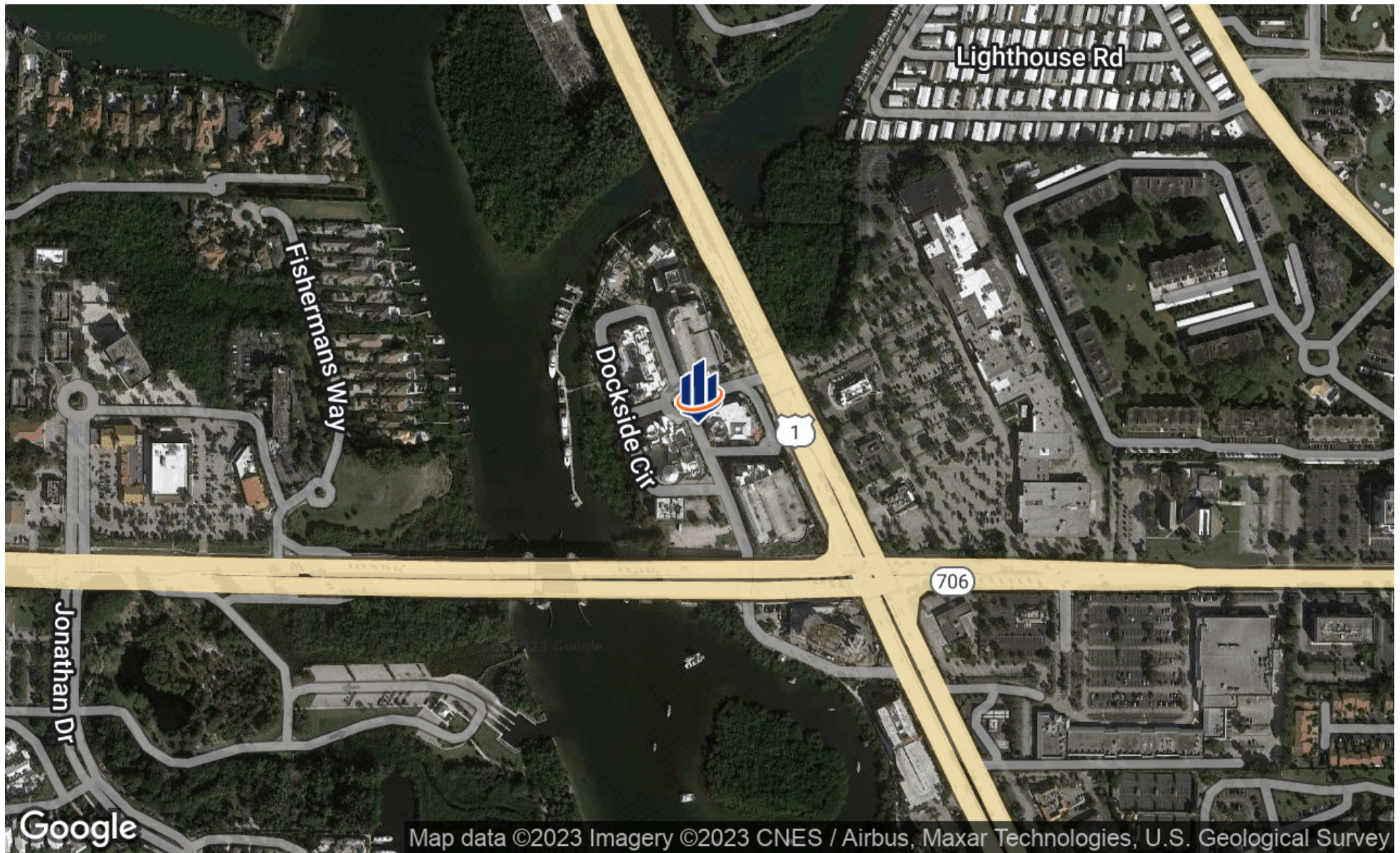
**ROB HAMMAN**  
C: 561.346.2310  
robert.hamman@svn.com

**HARBOURSIDE PLACE** 200 N. U.S. Highway One Jupiter, FL 33477

We obtained the information above from sources we believe to be reliable. However, we have not verified its accuracy and make no guarantee, warranty or representation about it. It is submitted subject to the possibility of errors, omissions, change of price, rental or other conditions, prior sale, lease or financing, or withdrawal without notice. We include projections, opinions, assumptions or estimates for example only, and they may not represent current or future performance of the property. You and your tax and legal advisors should conduct your own investigation of the property and transaction.

**SVN | COMMERCIAL PARTNERS 7**





ROB HAMMAN

C: 561.346.2310

robert.hamman@svn.com

HARBOURSIDE PLACE 200 N. U.S. Highway One Jupiter, FL 33477

We obtained the information above from sources we believe to be reliable. However, we have not verified its accuracy and make no guarantee, warranty or representation about it. It is submitted subject to the possibility of errors, omissions, change of price, rental or other conditions, prior sale, lease or financing, or withdrawal without notice. We include projections, opinions, assumptions or estimates for example only, and they may not represent current or future performance of the property. You and your tax and legal advisors should conduct your own investigation of the property and transaction.

SVN | COMMERCIAL PARTNERS 8



## POPULATION

## 1 MILE 5 MILES 10 MILES

TOTAL POPULATION	4,363	88,772	199,824
AVERAGE AGE	58.9	44.4	45.3
AVERAGE AGE (MALE)	60.9	44.4	45.3
AVERAGE AGE (FEMALE)	57.8	44.6	45.3

## HOUSEHOLDS & INCOME

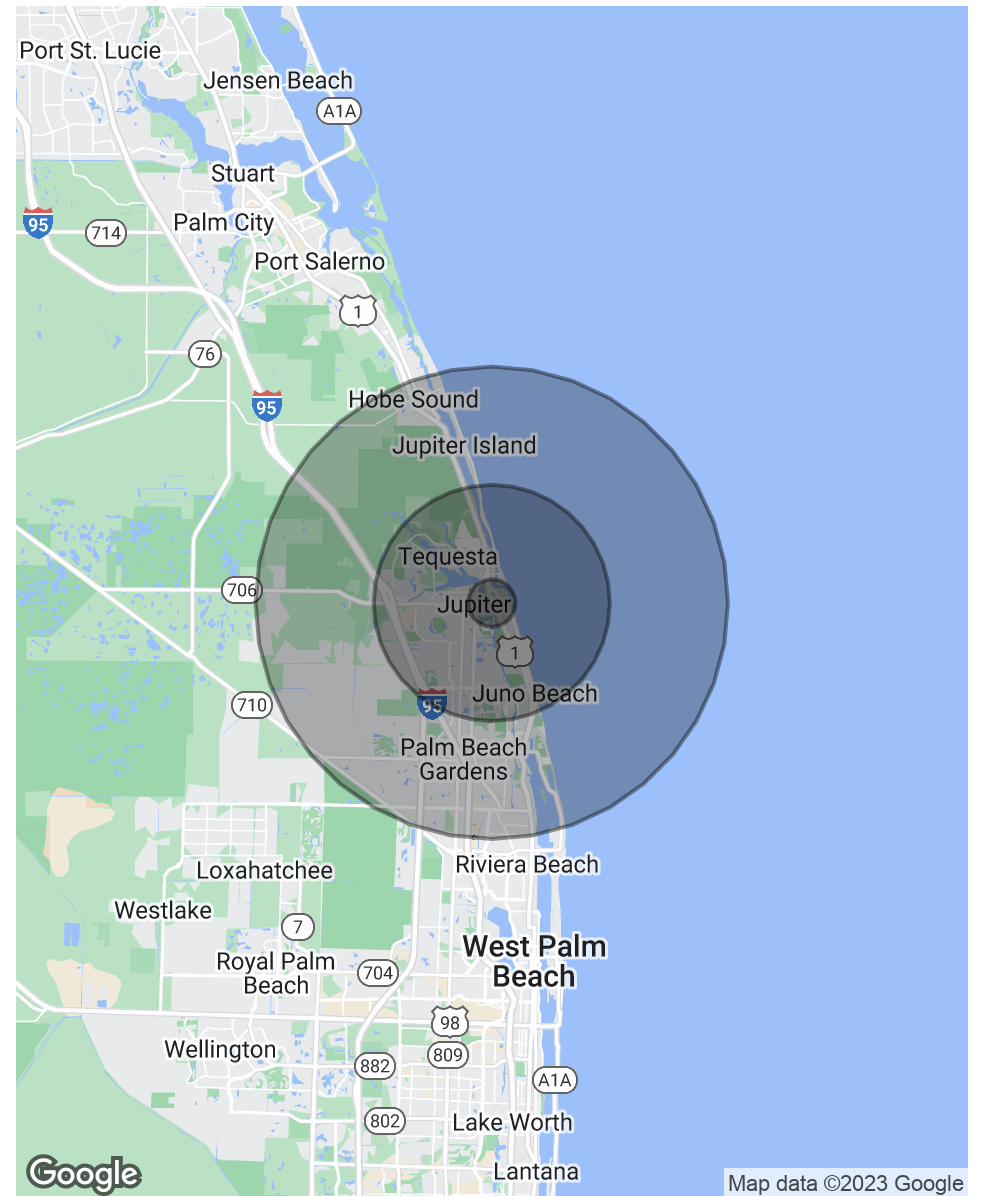
## 1 MILE 5 MILES 10 MILES

TOTAL HOUSEHOLDS	2,267	36,815	84,701
# OF PERSONS PER HH	1.9	2.4	2.4
AVERAGE HH INCOME	\$122,804	\$106,391	\$103,853
AVERAGE HOUSE VALUE	\$425,559	\$454,717	\$424,985

## TRAFFIC COUNTS

US 1 & INDIANTOWN ROAD	21,300/day
------------------------	------------

\* Demographic data derived from 2020 ACS - US Census



ROB HAMMAN

C: 561.346.2310

robert.hamman@svn.com

HARBOURSIDE PLACE 200 N. U.S. Highway One Jupiter, FL 33477

We obtained the information above from sources we believe to be reliable. However, we have not verified its accuracy and make no guarantee, warranty or representation about it. It is submitted subject to the possibility of errors, omissions, change of price, rental or other conditions, prior sale, lease or financing, or withdrawal without notice. We include projections, opinions, assumptions or estimates for example only, and they may not represent current or future performance of the property. You and your tax and legal advisors should conduct your own investigation of the property and transaction.

SVN | COMMERCIAL PARTNERS 9



**PRESENTED BY:**

**ROB HAMMAN**

561.346.2310

robert.hamman@svn.com

