



1931 COMMERCE LANE #5

JUPITER, FL 33458

Robert Hamman
Senior Advisor
561.346.2310
robert.hammant@svn.com

Property Summary



OFFERING SUMMARY

Available SF:	925± SF
Lease Rate:	N/A
Year Built:	2005
Building Size:	5,514± SF
Zoning:	Office

PROPERTY OVERVIEW

925± SF office suite with a reception area, three private offices, a conference room, kitchen/break room, and one bathroom. The suite includes pendant lighting, floor board and door moulding, and some built-in cabinets and shelves. Great locations for a CPA, attorney, real estate office, or any other professional office user.

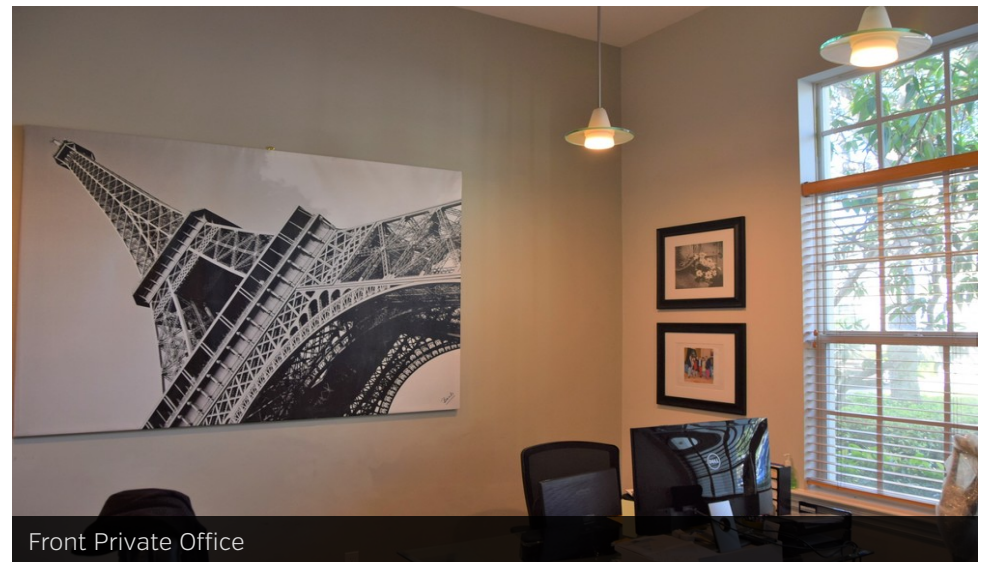
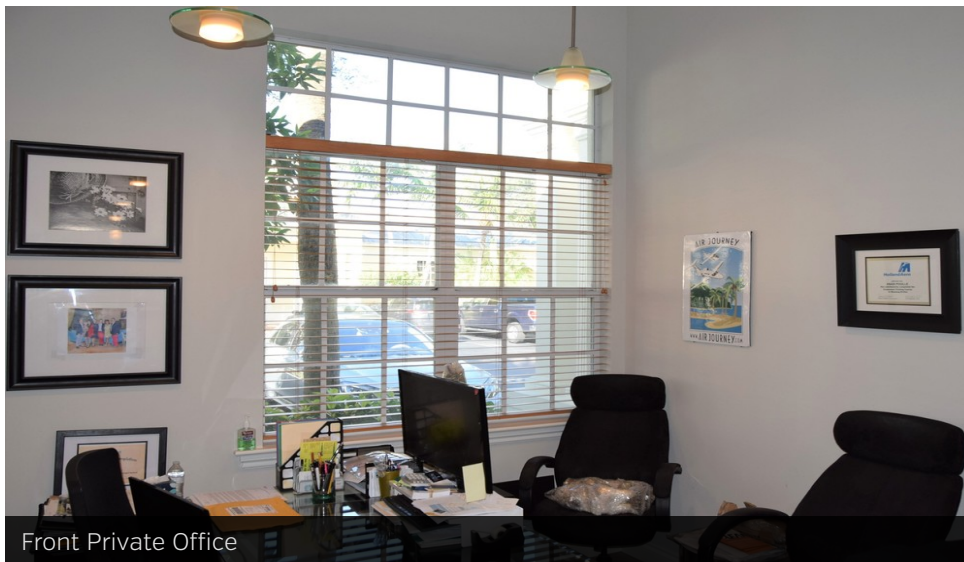
LOCATION OVERVIEW

This office condo is located within Maplewood Professional Center, less than a 1/2 mile south of Indiantown Road.

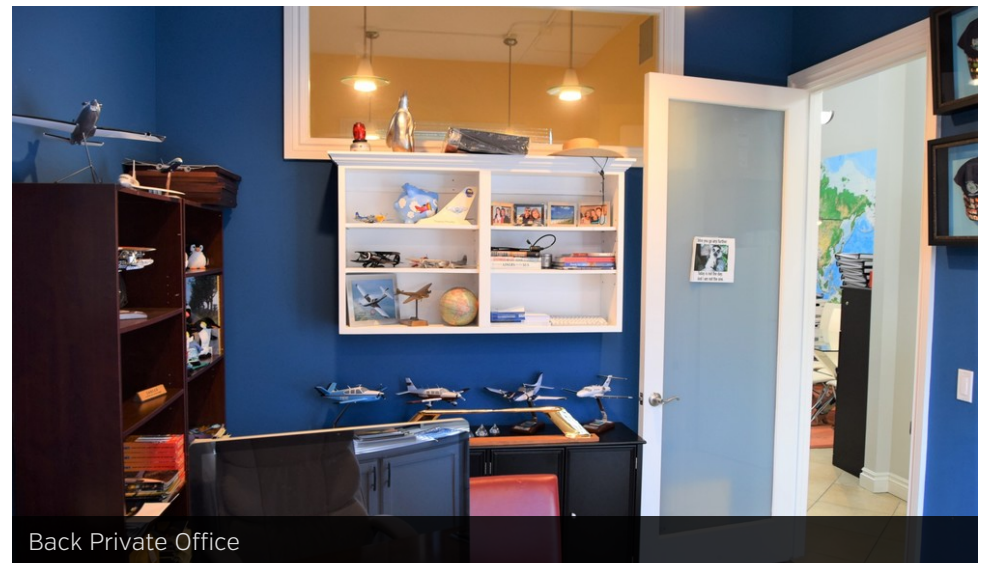
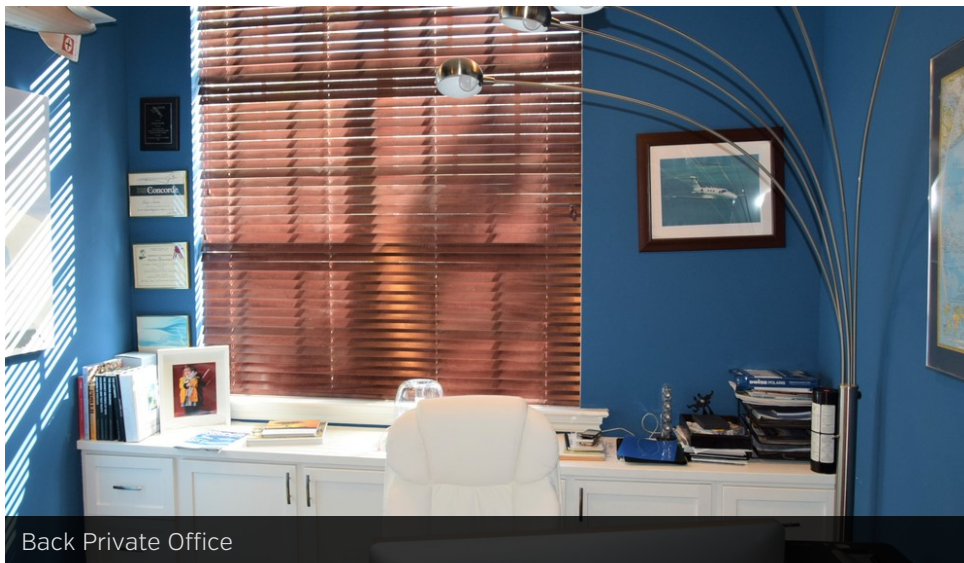
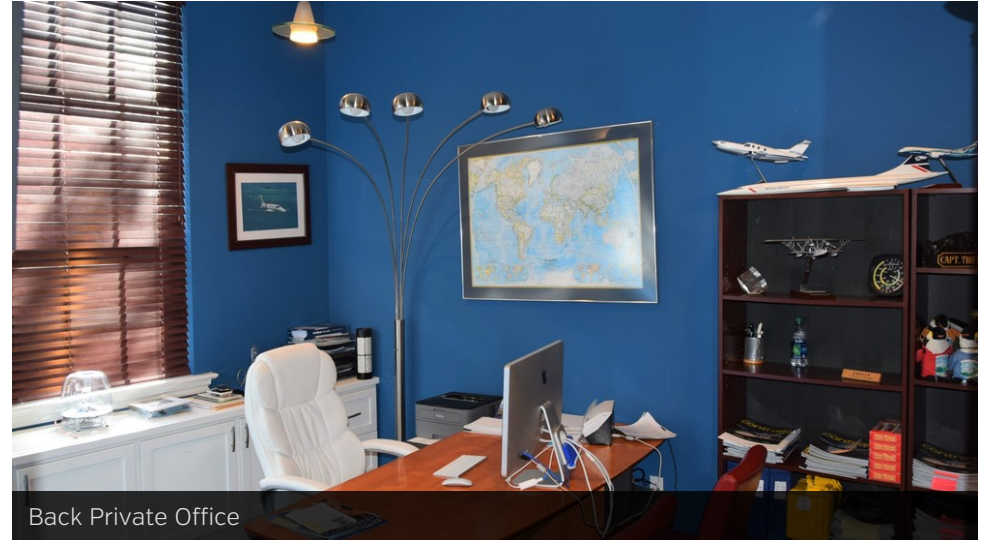
DEMOGRAPHICS

	1 MILE	3 MILES	5 MILES
Total Households	3,807	23,143	39,634
Total Population	9,273	61,072	97,162
Average HH Income	\$78,776	\$96,837	\$106,925

Interior Photos



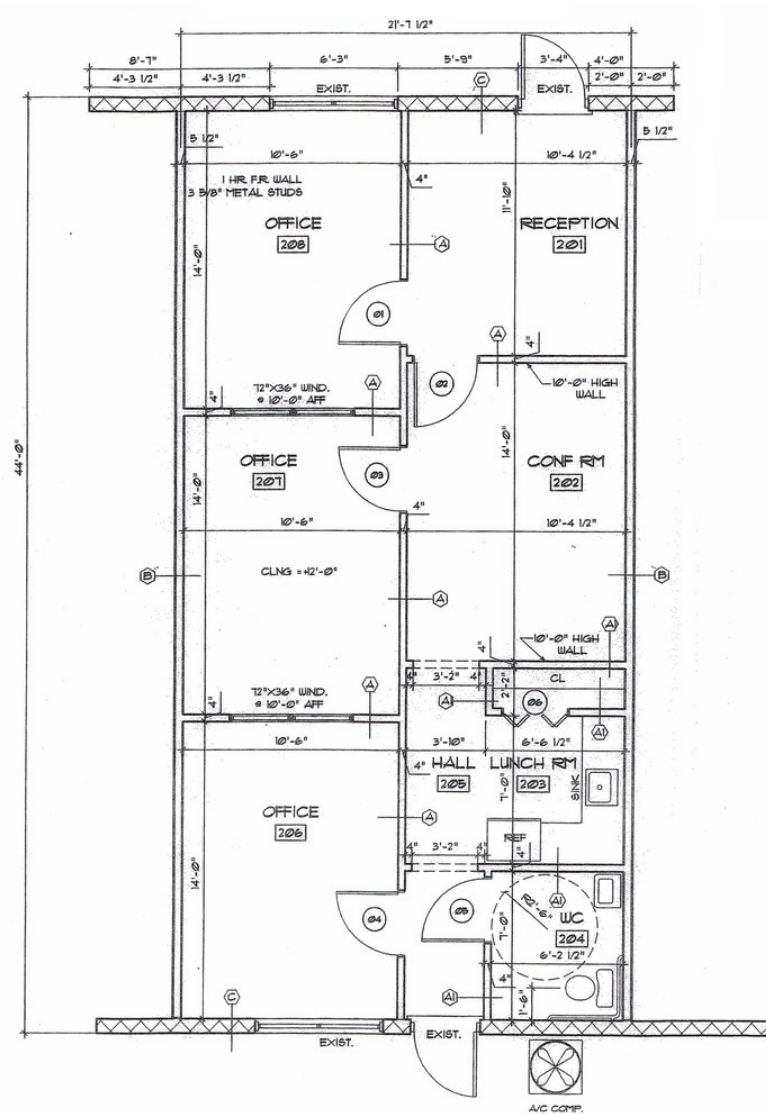
Interior Photos



Interior Photos



Floor Plan



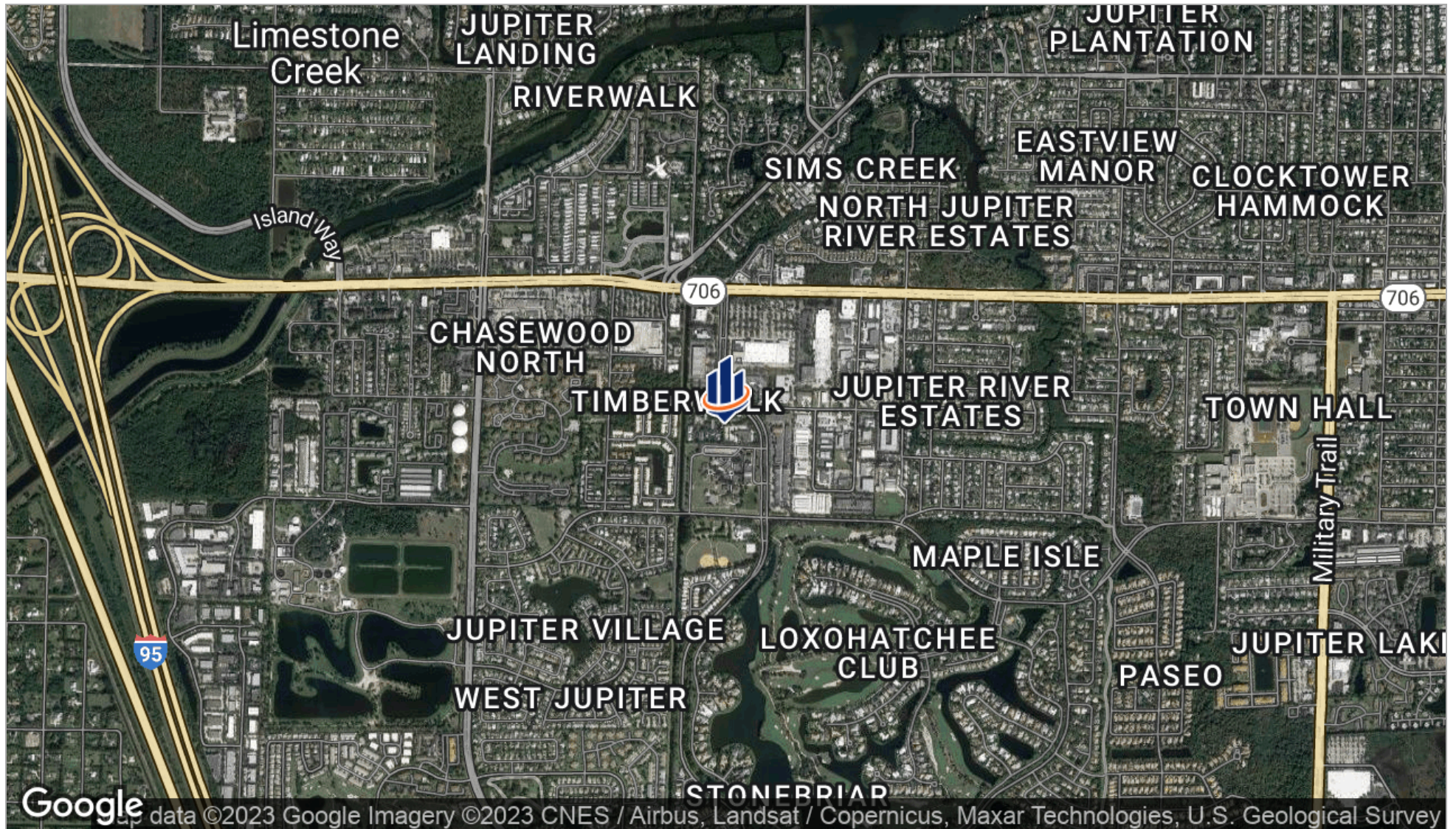
Exterior Photo



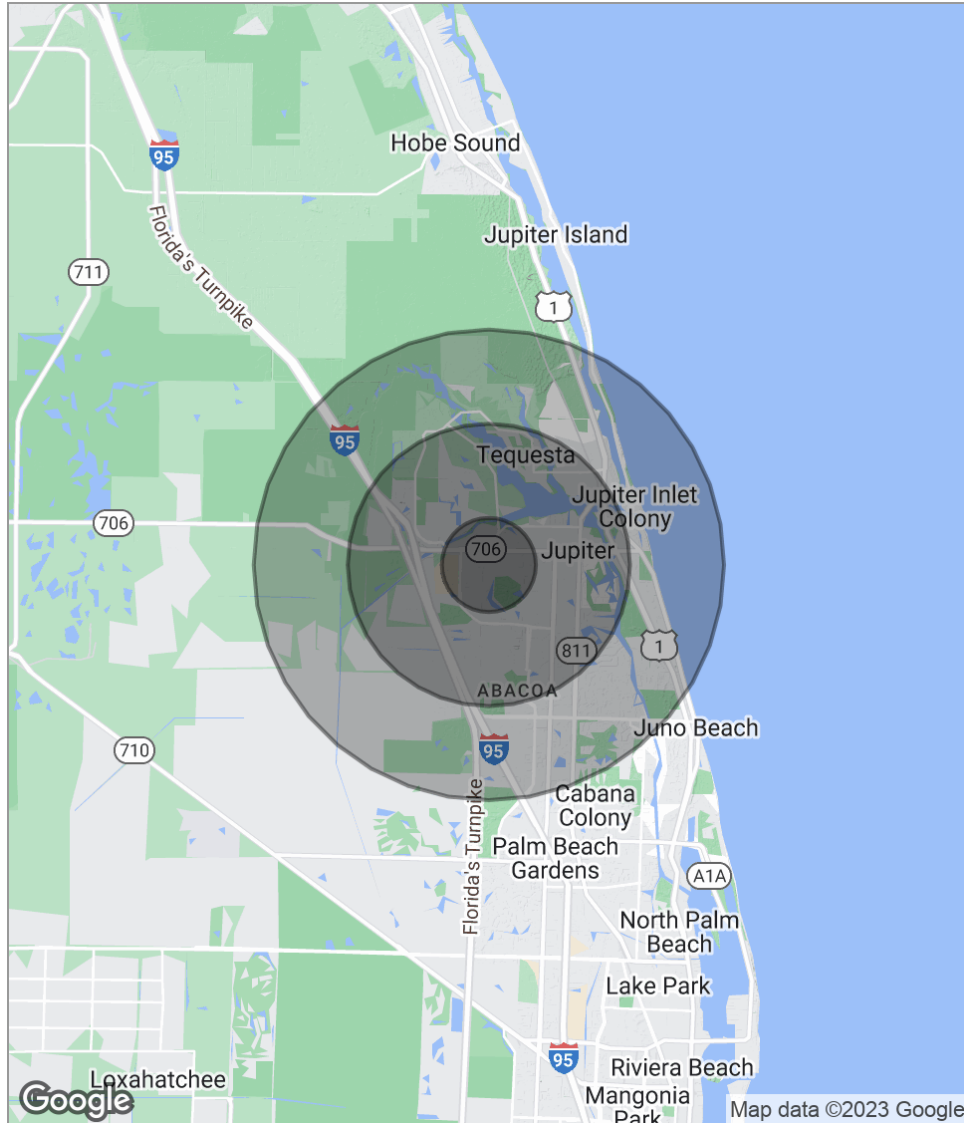
Parcel Outline



Location Map



Demographics Map



POPULATION	1 MILE	3 MILES	5 MILES
Total population	9,273	61,072	97,162
Median age	39.8	39.6	44.4
Median age (Male)	39.5	39.5	44.6
Median age (Female)	39.5	39.7	44.3
HOUSEHOLDS & INCOME	1 MILE	3 MILES	5 MILES
Total households	3,807	23,143	39,634
# of persons per HH	2.4	2.6	2.5
Average HH income	\$78,776	\$96,837	\$106,925
Average house value	\$379,283	\$427,760	\$453,495
ETHNICITY (%)	1 MILE	3 MILES	5 MILES
Hispanic	18.2%	15.6%	12.2%
RACE (%)	1 MILE	3 MILES	5 MILES
White	88.4%	87.9%	90.1%
Black	3.0%	3.2%	2.7%
Asian	1.8%	2.3%	2.1%
Hawaiian	0.0%	0.0%	0.0%
American Indian	0.1%	0.2%	0.2%
Other	5.2%	4.9%	3.6%

* Demographic data derived from 2020 ACS - US Census



810 Saturn Street, Suite 24 Unit B
Jupiter, FL 33477
561.346.2310