



# 1935 COMMERCE LANE #10

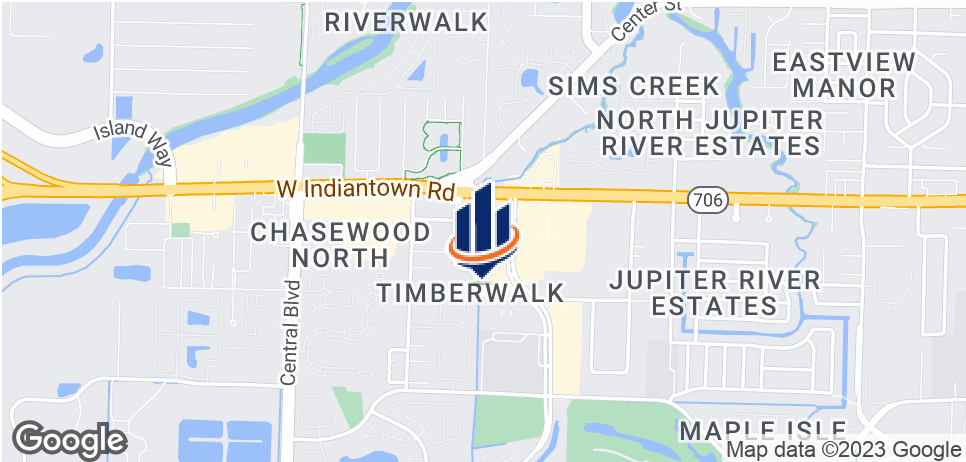
JUPITER, FL 33458

---

Robert Hamman  
Senior Advisor  
561.346.2310  
[robert.hamman@svn.com](mailto:robert.hamman@svn.com)



# Property Summary



## OFFERING SUMMARY

Available SF:	943± SF
Lease Rate:	\$2,450/month (Gross)
Year Built:	2005
Zoning:	Office

## PROPERTY OVERVIEW

Professionally decorated, 943± SF end-unit office condo with entrances at the front and side of the building. Multiple windows decorated with custom drapes provide natural light throughout the whole office. In addition, the space includes custom floor coverings, wallpaper, and light fixtures. There is a large private conference room, multiple work areas, one bathroom, and a kitchen which includes a refrigerator, sink, microwave and plenty of storage.

## LOCATION OVERVIEW

This office condo is located within Maplewood Professional Center, less than a 1/2 mile south of Indiantown Road.

## DEMOGRAPHICS

	1 MILE	3 MILES	5 MILES
Total Households	3,805	23,138	39,632
Total Population	9,271	61,071	97,115
Average HH Income	\$78,779	\$96,799	\$106,900



# Interior Photos



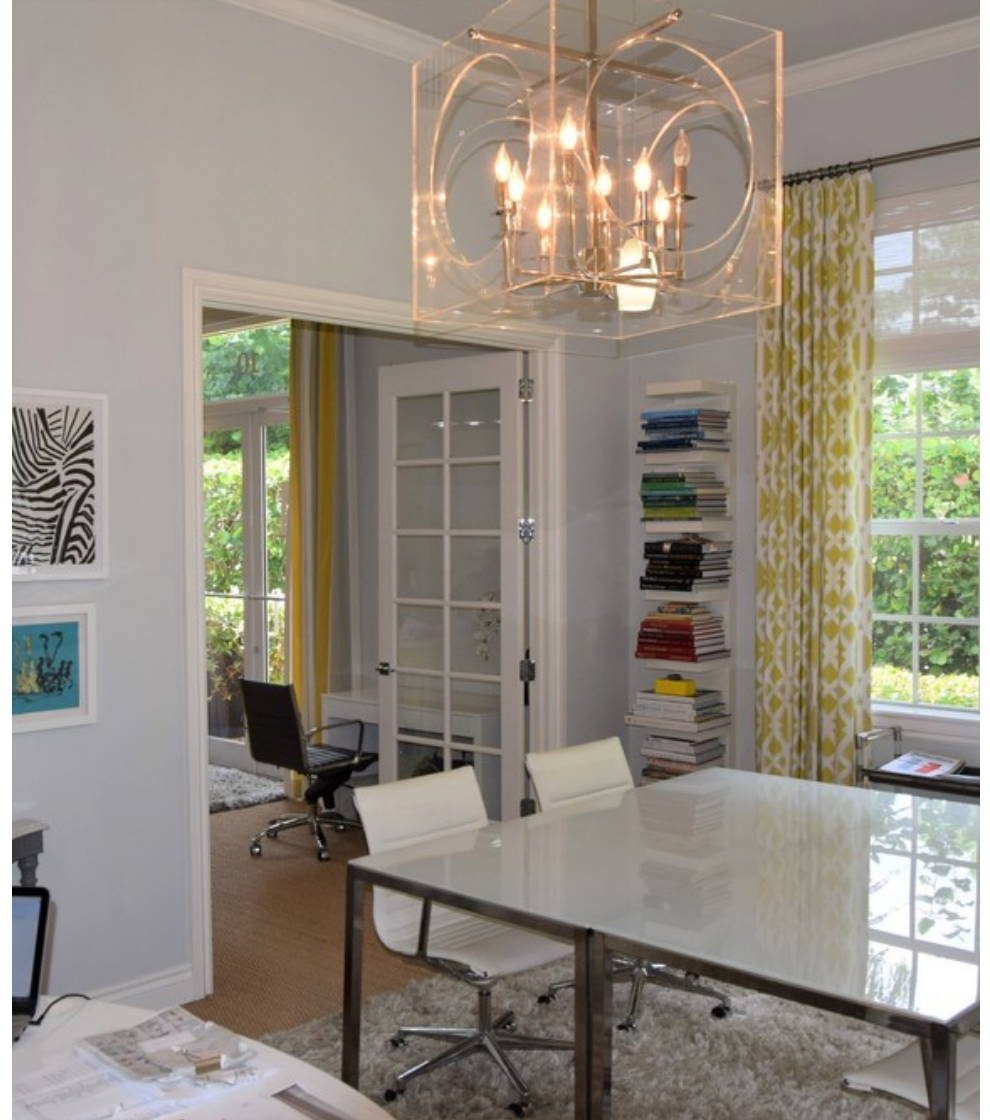


# Interior Photos





# Interior Photos





# Exterior Photo



1935 COMMERCE LANE #10 JUPITER, FL 33458

SVN | Florida Commercial Real Estate Advisors | Page 6

*The information presented here is deemed to be accurate, but it has not been independently verified. We make no guarantee, warranty or representation. It is your responsibility to independently confirm accuracy and completeness. All SVN® offices are independently owned and operated.*



# Exterior Photo

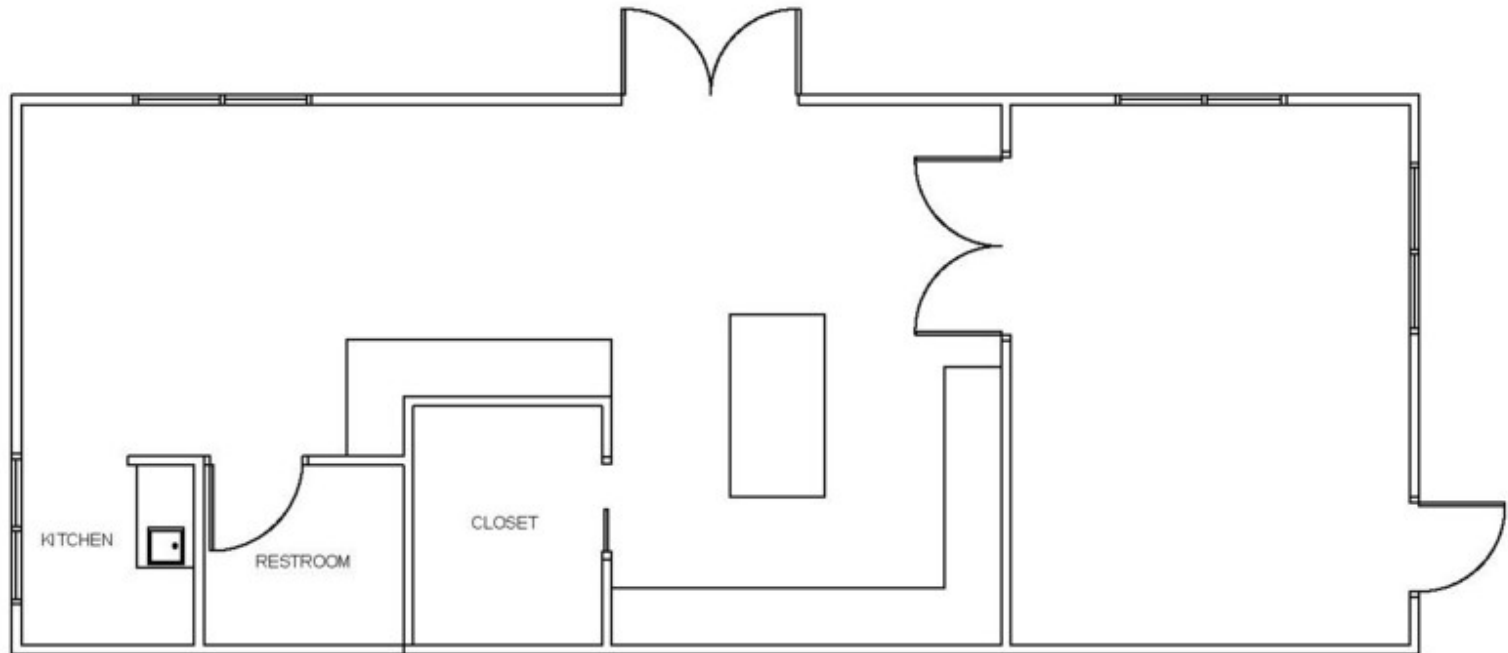


1935 COMMERCE LANE #10 JUPITER, FL 33458

SVN | Florida Commercial Real Estate Advisors | Page 7

*The information presented here is deemed to be accurate, but it has not been independently verified. We make no guarantee, warranty or representation. It is your responsibility to independently confirm accuracy and completeness. All SVN® offices are independently owned and operated.*

# Floor Plan





# Parcel Outline



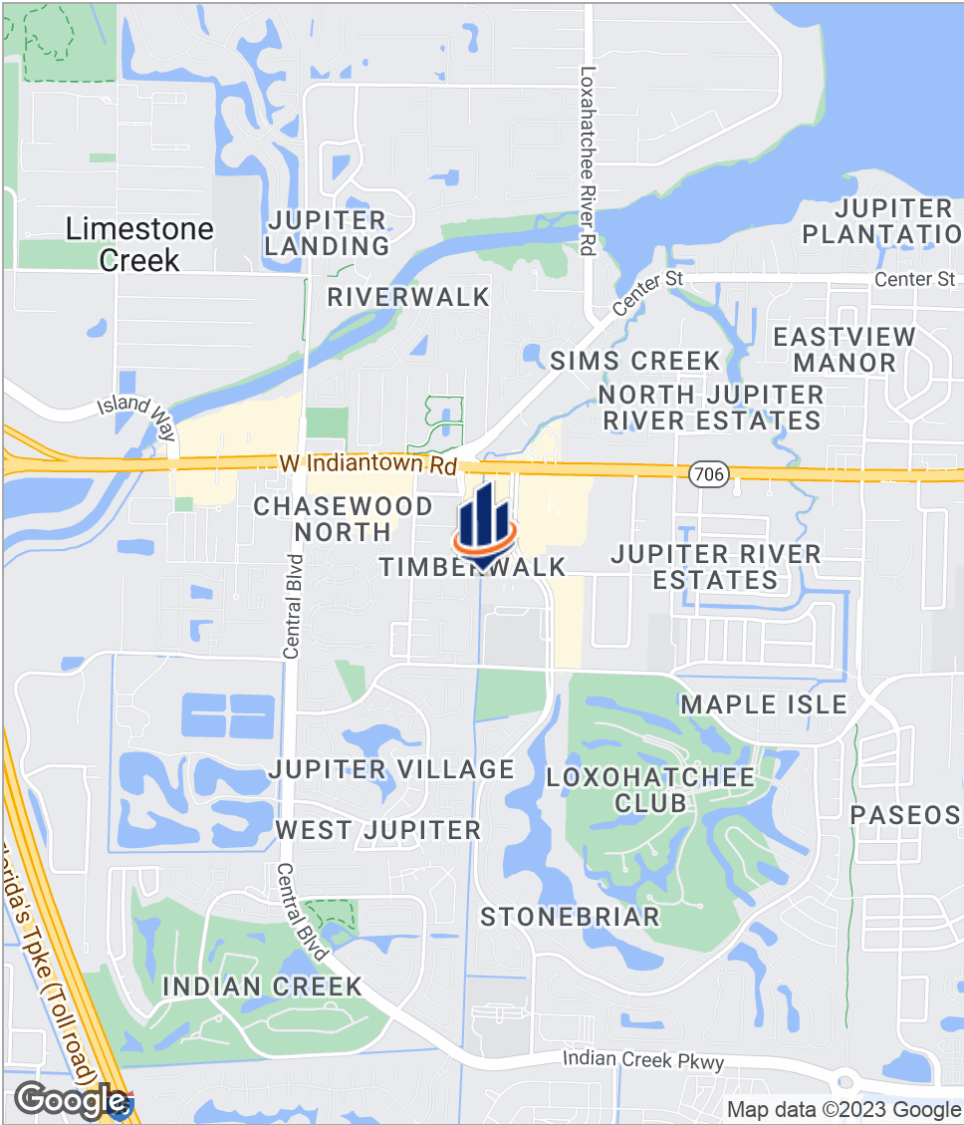
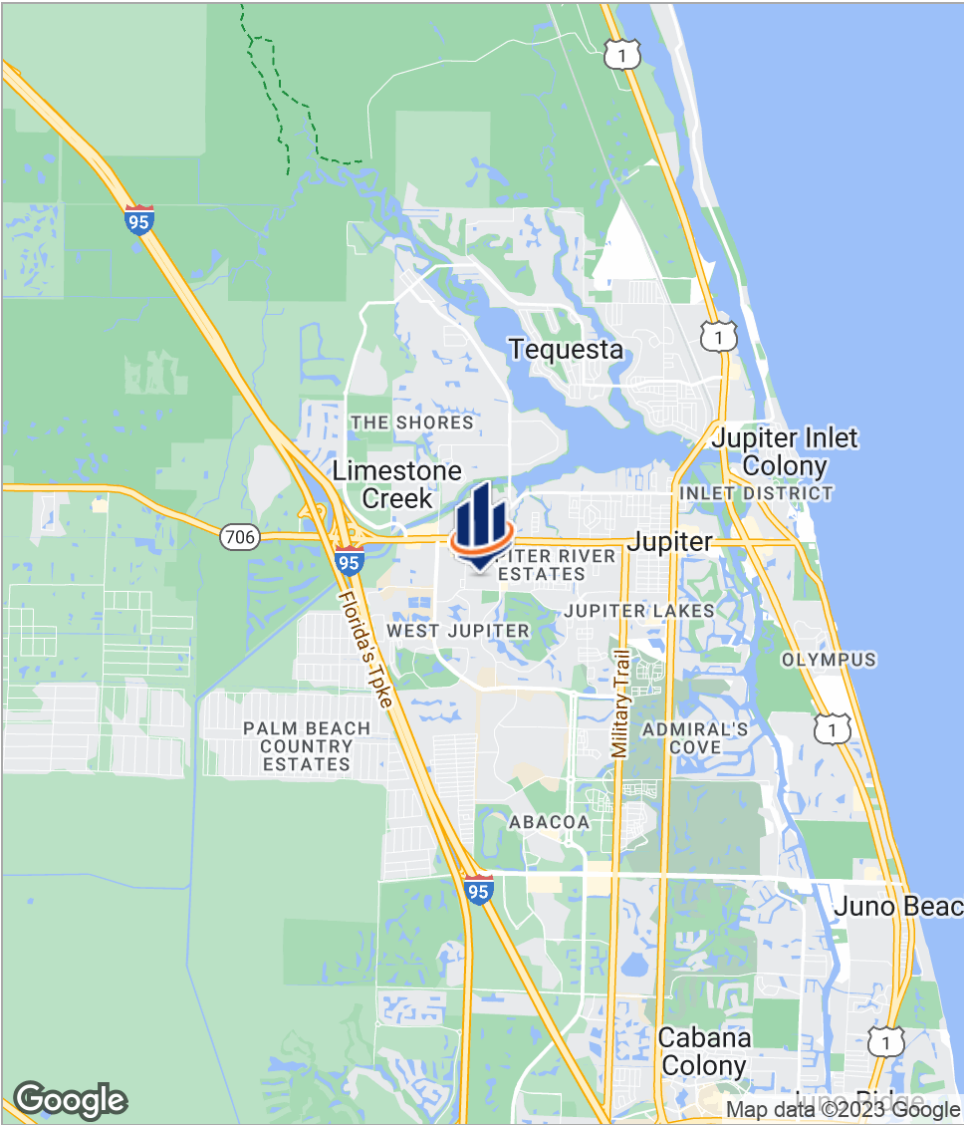
1935 COMMERCE LANE #10 JUPITER, FL 33458

SVN | Florida Commercial Real Estate Advisors | Page 9

The information presented here is deemed to be accurate, but it has not been independently verified. We make no guarantee, warranty or representation. It is your responsibility to independently confirm accuracy and completeness. All SVN® offices are independently owned and operated.

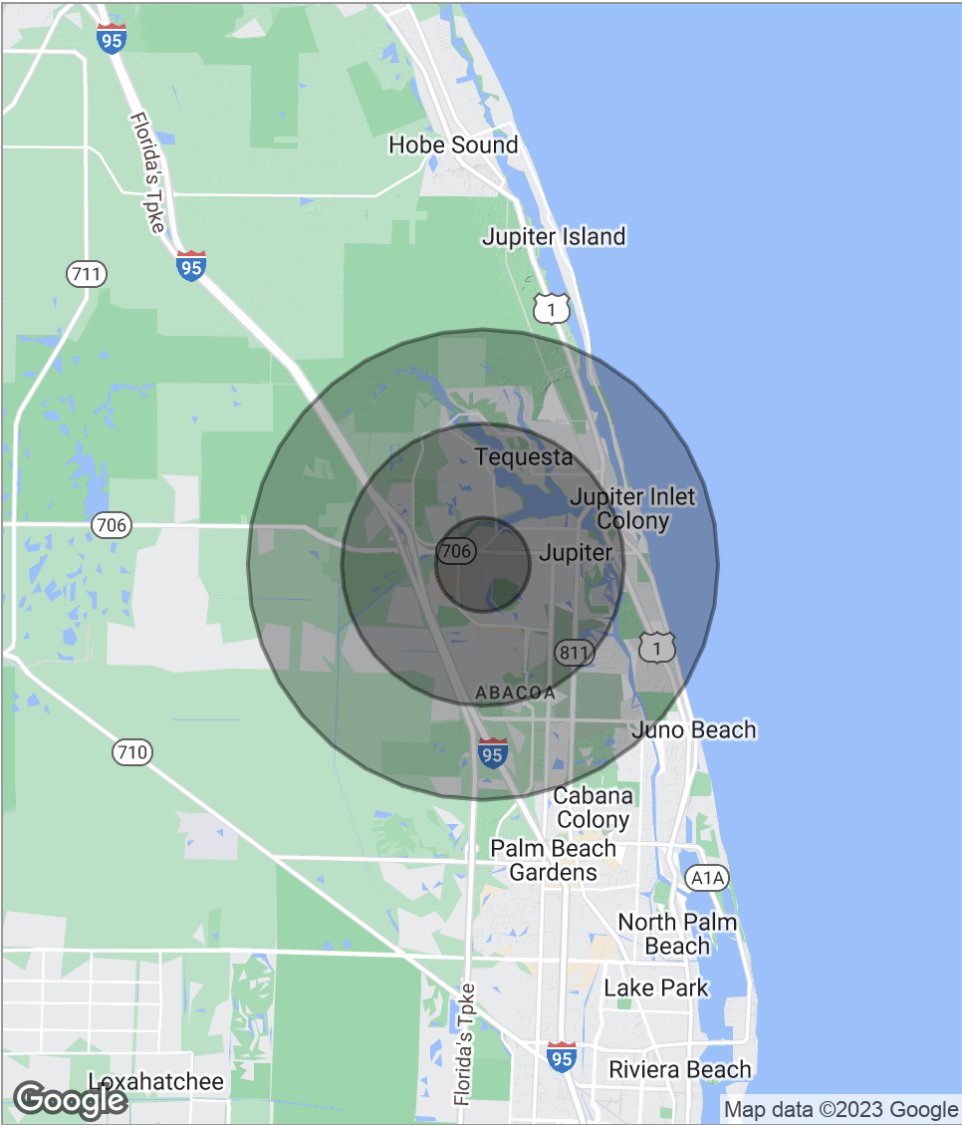


# Location Maps





# Demographics Map



POPULATION	1 MILE	3 MILES	5 MILES
Total population	9,271	61,071	97,115
Median age	39.8	39.6	44.4
Median age (Male)	39.5	39.5	44.6
Median age (Female)	39.5	39.7	44.3
HOUSEHOLDS & INCOME	1 MILE	3 MILES	5 MILES
Total households	3,805	23,138	39,632
# of persons per HH	2.4	2.6	2.5
Average HH income	\$78,779	\$96,799	\$106,900
Average house value	\$379,268	\$427,698	\$453,627

*\* Demographic data derived from 2020 ACS - US Census*





810 Saturn Street, Suite 24 Unit B  
Jupiter, FL 33477  
561.346.2310