

# SOUTHFORK PLAZA OFFICE SPACE

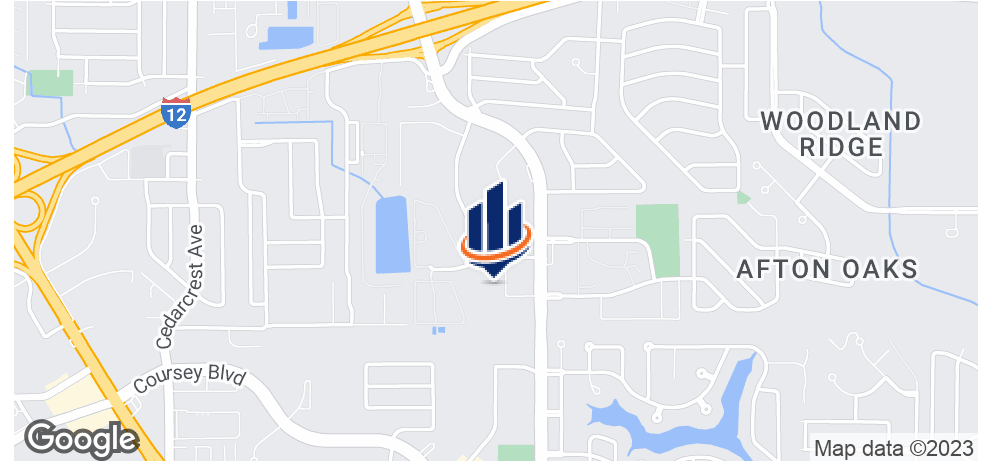
11606 SOUTHFORK AVE, BUILDING C  
BATON ROUGE, LA 70816

---

**Joey Canella**  
Senior Advisor  
O: 225.367.1515 x105  
[joey.canella@svn.com](mailto:joey.canella@svn.com)

**Steve Legendre, CCIM**  
Managing Director  
O: 225.367.1515 x102  
[steve.legendre@svn.com](mailto:steve.legendre@svn.com)

# Property Summary



## OFFERING SUMMARY

Available SF:

## PROPERTY OVERVIEW

Professional Office Space For Lease.

Suite 300-B = 4,500 SF. Floor Plan includes: 12 Offices, Large Meeting/Conference Room or Bullpen, Reception/Waiting Area, Kitchen/Break Room and 3 Restrooms.

Ample Parking.

Located in Southfork Plaza Office Park, right off S. Sherwood Forest Blvd between I-12 and Coursey Blvd.

Lease Rate:

N/A

Quick easy access to I-12 at S. Sherwood Forest Blvd.

## PROPERTY HIGHLIGHTS

- 12 Offices
- Large Conference/Meeting Room or Bullpen
- Nice Reception/Waiting Area
- Nice Kitchen/Break Room

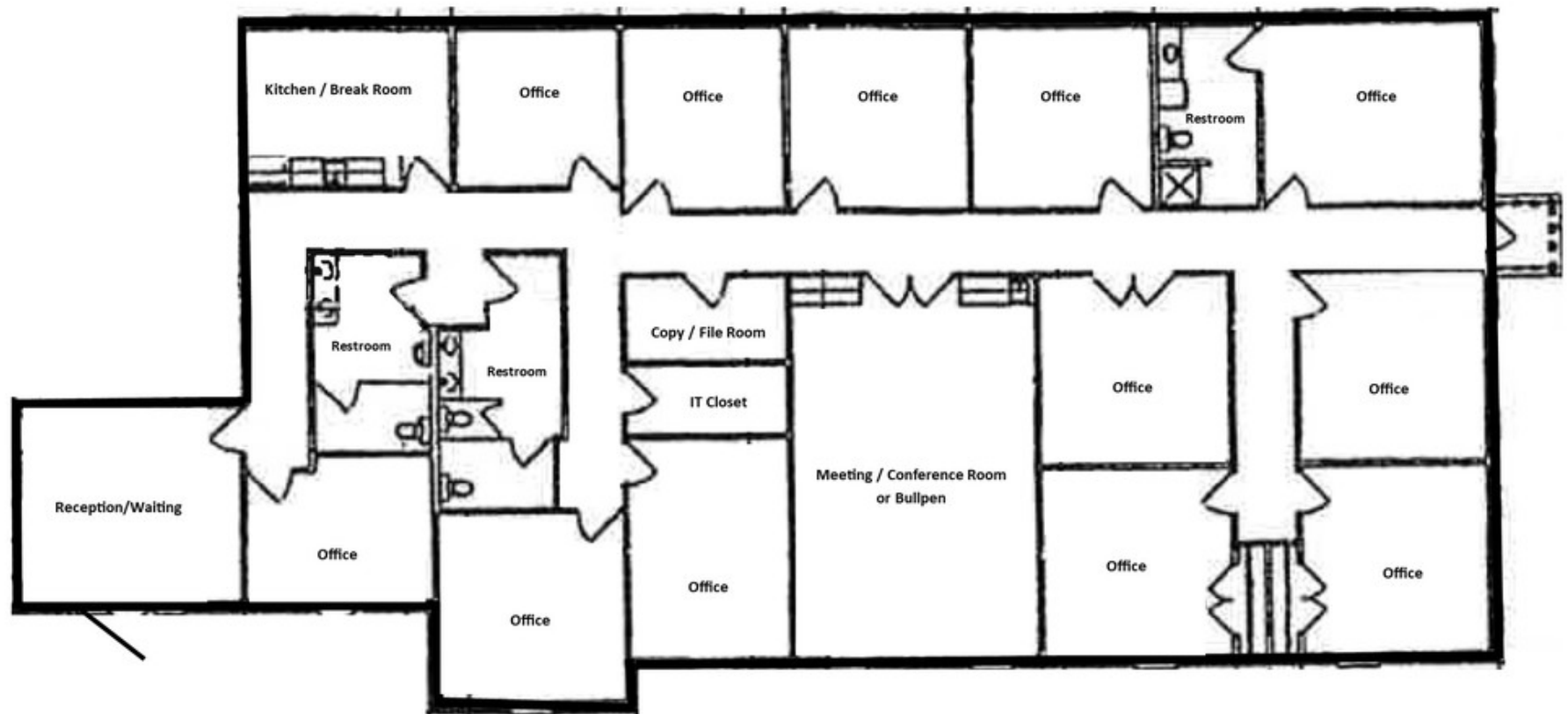
11606 SOUTHFORK AVE, BUILDING C BATON ROUGE, LA 70816

SVN | Graham, Langlois & Legendre | Page 2

The information presented here is deemed to be accurate, but it has not been independently verified. We make no guarantee, warranty or representation. It is your responsibility to independently confirm accuracy and completeness. All SVN® offices are independently owned and operated.

# Floor Plan - Suite 300-B

Floor Plan—11606 Southfork Ave, Suite 300B





# Location Maps

